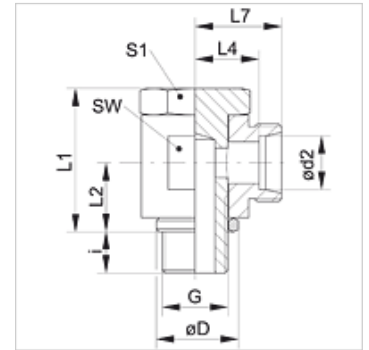


# XSWM VA

Suunatav liitmik, nurk 90°

## Omadused

|               |                                       |
|---------------|---------------------------------------|
| Ühendus 1     | Meetriline väliskeere, silindriline   |
| Tihenditüüp 1 | Tihendirõngas                         |
| Ühendus 2     | M-keere välis, silindriline           |
| Tihenditüüp 2 | 24° sisekoonus                        |
| Tüüp          | Suunatav liitmik .                    |
| Ehitustüüp    | Nurk 90°                              |
| Tavaline      | DIN 2353<br>ISO 8434-1                |
| Komplektis    | Liitmik (ilma mutri ja lõikurrõngata) |
| Materjal      | Roostevaba teras                      |



## Vihje

Viiteid monteerimise, paigaldamise, survetugevuse ja lubatud töötemperatuuride kohta leiata toruühenduste tehnilisest juhendist.

## Artikkel

| Märgistus        | Ehitusseeria | Töörõhk bar | Ø d2 (mm) | G          | Ø D (mm) | i (mm) | L1 (mm) | L2 (mm) | L4 (mm) | L7 (mm) | SW (mm) | S1 |
|------------------|--------------|-------------|-----------|------------|----------|--------|---------|---------|---------|---------|---------|----|
| XSWM NW 04 HL VA | L            | PN 250      | 6         | M 10 x 1   | 14,5     | 6      | 21,5    | 10,0    | 10,5    | 17,5    | 14      | 14 |
| XSWM NW 06 HL VA | L            | PN 250      | 8         | M 12 x 1,5 | 17,5     | 9      | 25,0    | 12,0    | 12,0    | 19,0    | 17      | 17 |
| XSWM NW 08 HL VA | L            | PN 250      | 10        | M 14 x 1,5 | 19,5     | 9      | 27,0    | 13,0    | 14,0    | 21,0    | 19      | 19 |
| XSWM NW 10 HL VA | L            | PN 250      | 12        | M 16 x 1,5 | 21,5     | 9      | 32,0    | 15,0    | 15,5    | 22,5    | 22      | 22 |
| XSWM NW 13 HL VA | L            | PN 250      | 15        | M 18 x 1,5 | 23,5     | 9      | 37,5    | 18,0    | 17,5    | 24,5    | 24      | 24 |
| XSWM NW 16 HL VA | L            | PN 160      | 18        | M 22 x 1,5 | 27,0     | 11     | 44,0    | 21,5    | 20,5    | 28,0    | 30      | 27 |
| XSWM NW 20 HL VA | L            | PN 160      | 22        | M 26 x 1,5 | 31,0     | 12     | 49,0    | 24,0    | 25,5    | 33,0    | 36      | 32 |
| XSWM NW 03 HS VA | S            | PN 250      | 6         | M 12 x 1,5 | 17,5     | 9      | 25,0    | 12,0    | 14,0    | 21,0    | 17      | 17 |
| XSWM NW 04 HS VA | S            | PN 250      | 8         | M 14 x 1,5 | 19,5     | 9      | 27,0    | 13,0    | 15,0    | 22,0    | 19      | 19 |
| XSWM NW 06 HS VA | S            | PN 250      | 10        | M 16 x 1,5 | 21,5     | 9      | 32,0    | 15,0    | 16,0    | 23,5    | 22      | 22 |
| XSWM NW 08 HS VA | S            | PN 250      | 12        | M 18 x 1,5 | 23,5     | 9      | 37,0    | 18,0    | 17,0    | 24,5    | 24      | 24 |
| XSWM NW 10 HS VA | S            | PN 250      | 14        | M 20 x 1,5 | 25,5     | 11     | 37,0    | 18,0    | 20,0    | 28,0    | 27      | 27 |
| XSWM NW 13 HS VA | S            | PN 160      | 16        | M 22 x 1,5 | 27,0     | 11     | 44,0    | 22,0    | 21,5    | 30,0    | 30      | 27 |
| XSWM NW 16 HS VA | S            | PN 160      | 20        | M 27 x 2   | 32,0     | 13     | 49,0    | 24,0    | 24,5    | 35,0    | 36      | 32 |

PN = nimirõhk PB = maks. töörõhk – Ehitusseeria: LL = väga kerge L = kerge S = raske – Ø d2 = toru välisläbimõõt

## Toote variandid

|        |  |
|--------|--|
| XSWM   | Suunatav liitmik, nurk 90°, Teras        |
| SWM VA | Käändühendus, nurk 90°, Roostevaba teras |