

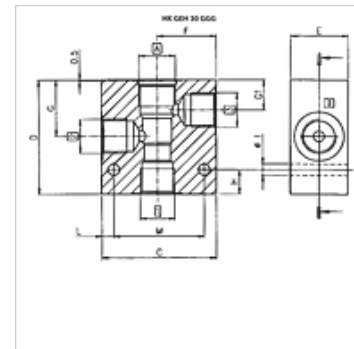
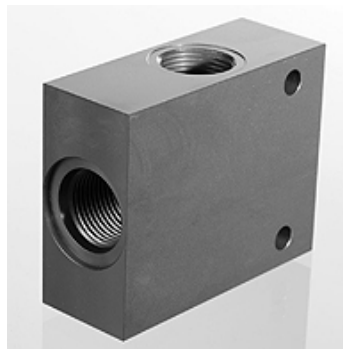
HK GEH 30 GGG

Ventiili korpus keerdventiilile SAE 3-käiguline GGG40

HANSA FLEX

Omadused

| | |
|--------------|---------------|
| Materjal | GGG 40 |
| Töö rõhk | max 350 baari |
| Pinnatöötlus | tsingitud |



Artikkel

| Märgistus | Ventiiliava puurimine | A | Ühendus- 1,3 | Ühendus 3 | C | D | E | F | G | G1 | H | I | L | M | Kaal |
|---------------------|--------------------------|-----------------|-----------------|--------------|------|------|------|------|------|------|------|------|------|------|------|
| | | | | | (mm) | (mm) | (mm) | (mm) | (mm) | (mm) | (mm) | (mm) | (mm) | (mm) | (kg) |
| HK GEH 38 C0830 GGG | C0830 | UNF 3/4" -16 | G 3/8" | G 3/8" | 60 | 65 | 29 | 30,0 | 29,5 | 15,0 | 15 | 7 | 7,5 | 44 | 0,6 |
| HK GEH 38 C1030 GGG | C1030 | UNF 7/8" -14 | G 3/8" | G 3/8" | 70 | 75 | 39 | 35,5 | 34,5 | 18,5 | 15 | 7 | 7,5 | 54 | 1,2 |
| HK GEH 12 C1230 GGG | C1230 | UNF 1,1/16" -12 | G 3/4" | G 1/2" | 80 | 100 | 39 | 40,0 | 53,5 | 28,5 | 18 | 9 | 10,0 | 59 | 1,7 |

on järgnevate toodete lisatarvikud

| | |
|---------|---|
| HK BFCV | 3-käiguline voolu reguleerimise ventii BFCV |
| HK PRRS | 3-käiguline reduktsioonklapp, PRRS |