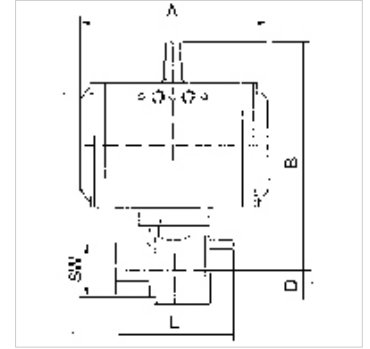


K-BKR STELLANTR E FEDER MS

Brass ball valves, single-acting actuator - spring to close

Omadused

Tüüp	Pneumatic actuators, in double- or single acting version, with integrated end-position feedback
Töörõhk	max. 40 bar (to DN 32); max. 25 bar (from DN 40); max. 16 bar (from DN 65)
Töötemperatuur	-20 °C to +70 °C
Pöördnurk	90 °
Juhtimisrõhk	5.5 bar
Ventiili adapter	Supplied as standard
Ajam	aluminium eloxed
Ajami tihend	NBR
Kuulkraan	Chrome-plated brass, with ISO-flange plate
Kuulkraani tihend	PTFE/FKM
Juhtimine	



Vihje

Lisaandmed saate soovi korral.

Kirjeldus

2-way cock, full bore

Artikkel

Märgistus	DN	Keere	A (mm)	B (mm)	D (mm)	L (mm)	SW (mm)
K- 07 30 02 27	15	Rp 1/2	133,0	142,0	17,0	75,0	26
K- 07 30 02 28	20	Rp 3/4	133,0	145,0	20,0	80,0	32
K- 07 30 02 29	25	Rp 1	133,0	148,0	25,0	90,0	41
K- 07 30 02 30	32	Rp 1 1/4	137,0	173,0	30,0	110,0	50
K- 07 30 02 31	40	Rp 1 1/2	137,0	180,0	36,0	120,0	55
K- 07 30 02 32	50	Rp 2	180,0	203,0	45,0	140,0	70
K- 07 30 02 33	65	Rp 2 1/2	209,0	230,0	57,0	155,0	83
K- 07 30 02 34	80	Rp 3	209,0	242,0	68,0	182,0	98