

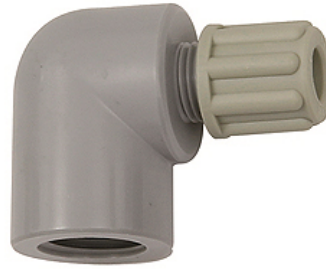
K-W90 GAM IG

Female elbows with female G thread

HANSA FLEX

Omadused

Töörõhk	Dependent on operating temperature; Max. 10 bar (at 20 °C); Max. 1 bar (at 60 °C)
Kruviühendus	Polyamide (PA)
Klemmrõngas	Polypropylene (PP)
Mutter	Polypropylene (PP)



Vihje

Lisaandmed saate soovi korral.

Kirjeldus

Manufactured from high impact-resistant, UV-stabilised engineering plastic, extremely resistant to weathering. Good chemical resistance to benzene, diesel oil, fuel oil and alkalis.
Not suitable for use with acids.

Artikkel

Märgistus	Keere	Vooliku jaoks	L1 (mm)	L2 (mm)
K- 07 40 32 98	G 1/8	4 mm / 6 mm	26,0	17,0
K- 07 40 32 99	G 1/8	6 mm / 8 mm	29,0	17,0
K- 07 40 33 00	G 1/4	4 mm / 6 mm	29,0	20,0
K- 07 40 33 01	G 1/4	6 mm / 8 mm	32,0	20,0
K- 07 40 33 02	G 1/4	8 mm / 10 mm	35,0	20,0