

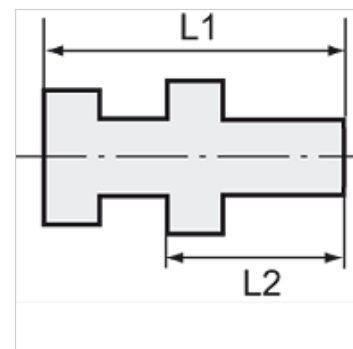
K-SV MS NI

Bulkhead connectors - nickel-plated brass

HANSA FLEX

Omadused

Töötemperatuur	Max. 150 °C
Surve	Max. 60 bar
Materjal	Nikeldatud messing



Vihje

The dimensions of the standard screw fittings may change slightly during the life of the catalogue as a result of optimisation processes.
Lisaandmed saate soovi korral.

Kirjeldus

Suitable for air, water, oil, steam, etc.

Lisateave

Further types and dimensions on request.

Artikkel

Märgistus	Väliskeere	Sisekeere	L1 (mm)	L2 (mm)	SW1 (mm)	SW2 (mm)
K- 07 40 34 27	M 16 x 1.5	G 1/8	18,0	14,0	22	19
K- 07 40 34 28	M 20 x 1.5	G 1/4	26,0	21,0	24	27
K- 07 40 34 29	M 26 x 1.5	G 3/8	26,0	21,0	32	30
K- 07 40 34 30	M 28 x 1.5	G 1/2	33,5	27,0	32	36