

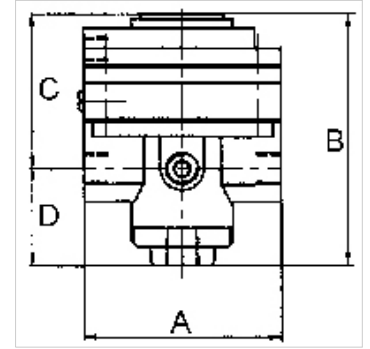
# K-PRAEZI DRUCKREGL PNEU FERN

Precision pressure regulators

**HANSA FLEX**

## Omadused

Sisendrõhk	Max. 16 bar
Aine temperatuur	max. 60 °C
Keskonnatemperatuur	Max. 60 °C
Vahendid	Micro-filtered, unoiled compressed air (0.01 µm)
Manomeetri ühendus	G 1/4
Läbivool	3000 l/min
Õhutusühendus	G 3/8 (for mounting a silencer)
Juhtimisrõhk	Max. 10 bar
Juhtõhu ühendus	G 1/8
Tihendusmaterjal	NBR
Korpus	Die-cast zinc, painted black
Sisemine õhutarve	6 l/min at Pin = 16 bar



## Vihje

Attention! A set of wearing parts cannot be supplied! These pressure regulators may only be opened in the factory! The given flow rates are based on the following parameters: 3000 l/min: P1: 5 bar, P2: 3 bar,  $\Delta p \leq 0,1$  bar.

Lisaandmed saate soovi korral.

## Kirjeldus

With high flow rate and large secondary relief port. Pneumatically controlled diaphragm pressure regulators with large secondary relief port for applications requiring an extremely accurate working pressure, especially at high flow rates. We recommend our »multifix« series of pilot controllers.

## Lisateave

1500 l/min: P1: 10 bar, P2: 7 bar,  $\Delta p \leq 0.1$  bar.

## Artikkel

Märgistus	Keere	Reguleerimisvahemik	A (mm)	B	C (mm)	D (mm)
K- 07 25 09 35	G 1/2	0.05 - 7 bar (max. 10 bar)	82,0	108,0 mm	64,5	43,5

## Varuosad

K-HALTERBAUSATZ STANDARD	Holder
K-KM MS	Hexagonal lock nuts, brass
K-SCHALLDAEPFER VYON	Vyon silencers
K-FILTERELEMENT	Filter element
K-XV AGM 2	Double nipples, parallel male thread