

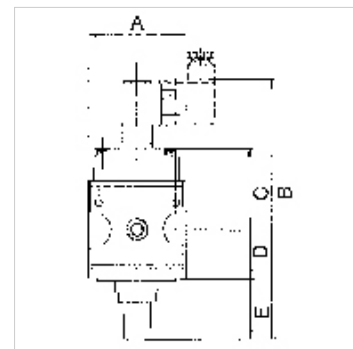
K-SCHALTVENTILE 3/2 MULTIFIX

On-off valves (3/2-way valves)

HANSA FLEX

Omadused

Sisendrõhk	Min. 2 bar, max. 10 bar
Aine temperatuur	max. 60 °C
Keskkonnatemperatuur	Max. 60 °C
Elektriühendus	Device plug PG 9, type B, EN 175301-803
Kaitse tüüp	IP 65 (P 54) acc. to DIN 40050
Sisselülituse kestvus suhteline	100 %
Õhutusühendus	Silencer G 1/4
Tihendusmaterjal	NBR
Korpus	Die-cast zinc
Läbivoolu väärtuse mõõtmine	At P1 = 6 bar and pressure drop $\Delta p = 1$ bar



Vihje

Lisaandmed saate soovi korral.

Kirjeldus

Pneumatic systems or parts of systems can be switched on and off by means of an electrical signal. When they are switched off, the system is relieved at the same time.

Tellimisinfo

On-off valves are also available in a pneumatically operated version. Please ask for more information.

Artikkel

Märgistus	Keere	Läbivool (L/min)	Magnetpool	A (mm)	B	C (mm)	D (mm)	E (mm)	Ehitussuurus
K- 07 25 11 65	G 1/4	900	24 V AC, 50 Hz	47,8	138,7 mm	43,7	26,0	17,5	1
K- 07 25 11 66	G 1/4	900	230 V AC, 50 Hz	47,8	138,7 mm	43,7	26,0	17,5	1
K- 07 25 11 67	G 1/4	900	110 V AC, 50 Hz	47,8	138,7 mm	43,7	26,0	17,5	1
K- 07 25 11 68	G 1/4	900	24 V DC	47,8	138,7 mm	43,7	26,0	17,5	1
K- 07 25 11 69	G 1/2	4000	24 V AC, 50 Hz / 12 V DC	68,8	185,0 mm	56,2	33,5	44,1	2
K- 07 25 11 70	G 1/2	4000	230 V AC, 50 Hz	68,8	185,0 mm	56,2	33,5	44,1	2
K- 07 25 11 71	G 1/2	4000	110 V AC, 50 Hz	68,8	185,0 mm	56,2	33,5	44,1	2
K- 07 25 11 72	G 1/2	4000	24 V DC	68,8	185,0 mm	56,2	33,5	44,1	2

Lisatarvikud

K-SCHALLDAE SINTERBR GE MS1 Silencers, sintered bronze, with brass hexagon nut and brass thread

Varuosad

K-KOPPELPAKET MEHR	Coupling packet
K-KOPPELPAKET SCHMA	Coupling packet
K-GERAETESTECKER	Coupling socket
K-HALTERBAUSATZ MULTIFIX	Holder
K-MAGNETSPULE MULTIFIX	Solenoid
K-WV 3/2 VORSTEU HAND MULTIFIX	3/2-way valve