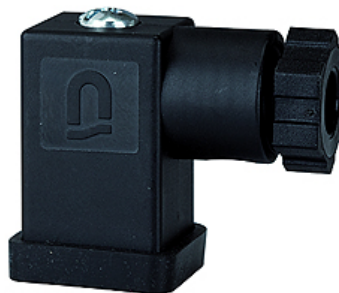


# K-GERAETESTECKER FORM C

Connector

**HANSA FLEX**



## Kirjeldus

Connector

## Artikkel

Märgistus	Kirjeldus	Ehitussuurus
K- 07 25 18 08	Connector	1

## on järgnevate toodete varuosad

K-WV 3/2 ELK 24 VDC HANSA	3/2-way valves, electrically operated, with 24 VDC / 2.5 W solenoid
K-WV 3/2 ELK 230 VAC / 50HZ HANSA	3/2-way valves, electrically operated, with 230 VAC / 50 Hz solenoid
K-BEFUELLEINHEIT 24VDC HANSA	Filling units, electrically operated, with 24 VDC / 2.5 W solenoid, adjustable filling time
K-BEFUELLEINHEIT 230V AC HANSA	Filling units, electrically operated, with 230 VAC / 5= Hz solenoid, adjustable filling time