

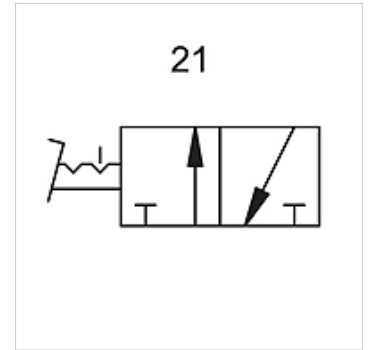
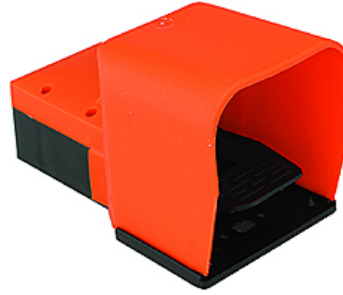
K-WFV 3/2 RASTEND FUS

3/2-way foot-operated valves (bistable, latching, with foot guard)

HANSA FLEX

Omadused

Töörõhk	2.5 - 10 bar
Temperatuuri ulatus	-10 °C to +60 °C
Läbivool 6,3 bar ja Δ 0,5 bar juures	60 NI/min (4 mm and M5), 640 NI/min (G 1/4)
Läbivool 6,3 bar ja Δ 1 bar juures	95 NI/min (4 mm and M5), 840 NI/min (G 1/4)



Vihje

Lisaandmed saate soovi korral.

Kirjeldus

Foot-operated valves, 3/2- and 5/2-way types, bistable or monostable (non-latching).

Artikkel

Märgistus	Ühendus	Lülituspildi number
K- 07 15 00 21	M 5	21
K- 07 15 00 22	4 mm	21