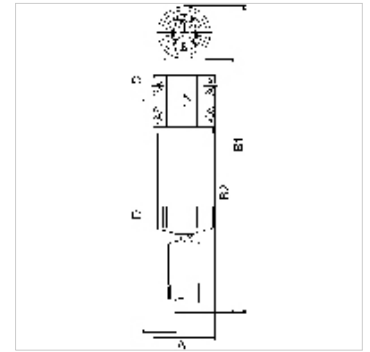


# K-VORFILTER O MANO

## Pre-filters without differential pressure gauge

### Omadused

<b>Sisendrõhk</b>	Min. 4 bar, Max. 16 bar
<b>Rõhuerinevuste manomeetri näiduvahemik</b>	0 - 2 bar
<b>Korpus, filtrimahuti</b>	Aluminium
<b>Keskonnatemperatuur</b>	+5 °C to +60 °C
<b>Filtri peensus</b>	2,00 µm
<b>Osakeste eraldamine</b>	2 µm
<b>Toime</b>	99.99 %
<b>Filtrikassett</b>	Polyethylene (with 45% cavity)
<b>Läbivoolu väärtuse mõõtmine</b>	At P1 = 6 bar and pressure drop $\Delta p = 0.5\%$



### Vihje

Lisaandmed saate soovi korral.

### Kirjeldus

Suitable for all applications where the standard centrifugal separators do not afford the desired efficiency. The pre-filters and micro-filters are equipped with an automatic drain valve. All devices can be supplied with or without a differential pressure gauge. The differential pressure gauge indicates the degree of contamination of the filter element as a function of the pressure drop.

### Artikkel

Märgistus	Keere	Läbivool (L/min)	A (mm)	B2 (mm)	C (mm)	D (mm)
K- 07 25 12 94	G 1/4	1000	82,5	338,0	57,0	353,0
K- 07 25 12 95	G 3/8	1000	82,5	338,0	57,0	353,0
K- 07 25 12 96	G 1/2	1000	82,5	338,0	57,0	353,0
K- 07 25 12 97	G 3/4	2000	82,5	408,0	57,0	493,0
K- 07 25 12 98	G 1	3000	118,0	423,0	72,0	458,0
K- 07 25 12 99	G 1 1/4	5300	118,0	523,0	72,0	658,0
K- 07 25 13 00	G 1 1/2	8300	118,0	623,0	72,0	858,0
K- 07 25 13 01	G 2	13000	118,0	813,0	72,0	1238,0

### Varuosad

<b>K-FILTERELEMENT SONDER</b>	Filter element
<b>K-VERBINDUNGSELEMENTE SOND</b>	Connecting sets
<b>K-HALTERBAUSATZ</b>	Holder
<b>K-AUTOMAT ABLASSVENTIL</b>	Automatic drain valve