

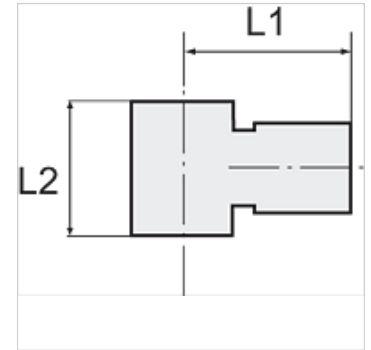
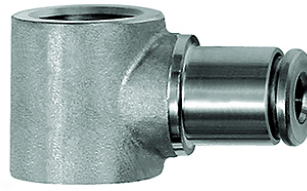
K-L-RINGSTUECK

Ring nipples, single

HANSA FLEX

Omadused

Töörõhk, pulseeriv	Max. 10 bar
Surve	Max. 15 bar (depending on pipe quality)
sobiv materjal	PVDF, PTFE, stainless steel, PA, PU
Tavaline	G thread acc. to DIN EN ISO 228-1
Keskkonnatemperatuur	-20 °C to max. +150 °C (depending on pipe quality and diameter)
Materjal	Roostevaba teras 1.4404
Tihendusmaterjal	FKM



Vihje

Lisaandmed saate soovi korral.

Kirjeldus

For use with aggressive media and in areas with corrosive outside influences, in the food processing industry and in hygienic and sanitary applications.

Artikkel

Märgistus	Keere	vooliku välimise-Ø jaoks (mm)	L1 (mm)	L2 (mm)
K- 07 40 47 10	G 1/8	4 mm	19,5	15,0
K- 07 40 47 11	G 1/8	6 mm	22,0	15,0
K- 07 40 47 12	G 1/8	8 mm	22,5	15,0
K- 07 40 47 08	G 1/4	6 mm	23,5	17,0
K- 07 40 47 09	G 1/4	8 mm	24,0	17,0
K- 07 40 47 07	G 1/4	10 mm	27,0	17,0
K- 07 40 47 13	G 3/8	10 mm	29,0	20,0
K- 07 40 47 14	G 3/8	12 mm	31,0	20,0
K- 07 40 47 06	G 1/2	12 mm	33,0	24,0