

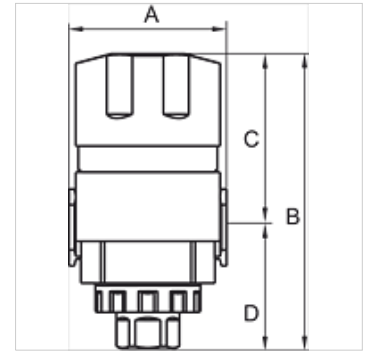
# K-3/2 ABSPERRVENTILE HW SCHL G-MINI

3/2-way shut-off valve

**HANSA FLEX**

## Omadused

|                             |                                                                |
|-----------------------------|----------------------------------------------------------------|
| Sisendrõhk                  | 0 - 9 bar                                                      |
| Aine temperatuur            | max. 70 °C                                                     |
| Keskonnatemperatuur         | Max. 70 °C                                                     |
| Õhutusühendus               | G 1/4                                                          |
| Tihendusmaterjal            | NBR                                                            |
| Korpus                      | Die-cast aluminium                                             |
| Tropp                       | Plastic                                                        |
| Läbivoolu väärtuse mõõtmine | At P1 = 8 bar, P2 = 6 bar and pressure drop $\Delta p = 1$ bar |
| Muud andmed                 | User manual on request                                         |



## Artikkel

| Märgistus      | Keere | Läbivool<br>(L/min) | A<br>(mm) | B       | C<br>(mm) | D<br>(mm) | Ehitussuurus |
|----------------|-------|---------------------|-----------|---------|-----------|-----------|--------------|
| K- 07 25 12 29 | G 1/8 | 1750                | 38,0      | 89,0 mm | 52,5      | 36,5      | 200          |
| K- 07 25 12 30 | G 1/4 | 1750                | 38,0      | 89,0 mm | 52,5      | 36,5      | 200          |

## Lisatarvikud

|                      |                 |
|----------------------|-----------------|
| K-VERBINDUNGELEMENTE | Connecting sets |
| K-WANDHALTER         | Wall bracket    |
| K-HALTERBAUSATZ      | Holder          |