

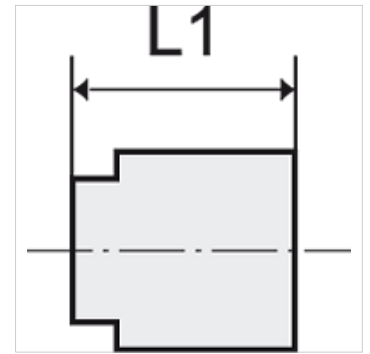
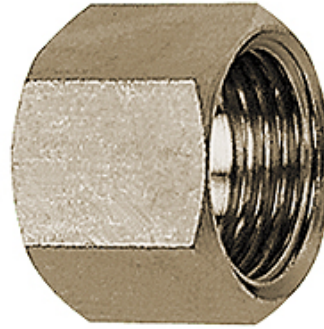
# K-UEM MS NI

Hexagonal swivel nuts - nickel plated brass

**HANSA FLEX**

## Omadused

Töötemperatuur	Max. 150 °C
Surve	Max. 60 bar
Materjal	Nikeldatud messing



## Vihje

The dimensions of the standard screw fittings may change slightly during the life of the catalogue as a result of optimisation processes. Lisaandmed saate soovi korral.

## Kirjeldus

Suitable for air, water, oil, steam, etc.

## Lisateave

Further types and dimensions on request.

## Artikkel

Märgistus	Keere	hülsi suurusele	L1 (mm)	SW
K- 07 40 44 22	G 1/8	I.D. 4, I.D. 6	13,0	14 mm
K- 07 40 44 23	G 1/4	I.D. 4, I.D. 6	15,0	17 mm
K- 07 40 44 24	G 3/8	I.D. 9	15,0	19 mm
K- 07 40 44 25	G 1/2	I.D. 4, I.D. 6, I.D. 9	16,0	24 mm