

K-TUE IG MS NI

Female stems with parallel female thread - nickel-plated brass

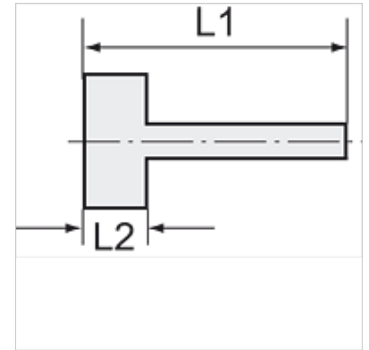
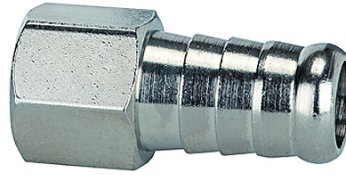
HANSA FLEX

Omadused

Töötemperatuur Max. 150 °C

Surve Max. 60 bar

Materjal Nikeldatud messing



Vihje

The dimensions of the standard screw fittings may change slightly during the life of the catalogue as a result of optimisation processes.
Lisaandmed saate soovi korral.

Kirjeldus

Suitable for air, water, oil, steam, etc.

Lisateave

Further types and dimensions on request.

Artikkel

Märgistus	Keere	Vooliku jaoks	L1 (mm)	L2 (mm)	SW
K- 07 40 11 76	G 1/8	LW 6 mm	28,0	8,5	12 mm
K- 07 40 11 77	G 1/8	LW 8 mm	28,0	8,5	12 mm
K- 07 40 11 78	G 1/8	LW 9 mm	28,0	8,5	12 mm
K- 07 40 11 79	G 1/8	LW 10 mm	28,0	8,5	12 mm
K- 07 40 11 80	G 1/4	LW 6 mm	33,0	10,0	15 mm
K- 07 40 11 81	G 1/4	LW 8 mm	33,0	10,0	15 mm
K- 07 40 11 82	G 1/4	LW 9 mm	33,0	10,0	15 mm
K- 07 40 11 83	G 1/4	LW 10 mm	33,0	10,0	15 mm
K- 07 40 11 84	G 1/4	LW 12 mm	33,0	10,0	15 mm
K- 07 40 11 85	G 3/8	LW 8 mm	35,0	12,0	19 mm
K- 07 40 11 86	G 3/8	LW 10 mm	35,0	12,0	19 mm
K- 07 40 11 87	G 3/8	LW 12 mm	35,0	12,0	19 mm
K- 07 40 11 88	G 3/8	LW 14 mm	35,0	12,0	19 mm
K- 07 40 11 89	G 1/2	LW 10 mm	38,0	14,0	25 mm
K- 07 40 11 90	G 1/2	LW 12 mm	41,0	14,0	25 mm
K- 07 40 11 91	G 1/2	LW 14 mm	41,0	14,0	25 mm