

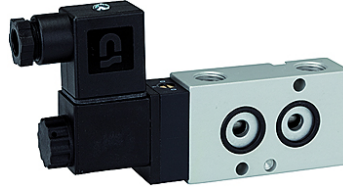
# K-WV 3/2 LB NAMUR

3/2-way spool valves with NAMUR style interface, NC

**HANSA FLEX**

## Omadused

Vahendid	Air, neutral gases, filtered
Töörõhk	1.5 to 10 bar
Töötemperatuur	-20 °C to +70 °C
Elektriühendus	Plug connector PG 9
Sisaldub tarnepakendis	Plug connector PG 9, 1 coding pin, 2 O-rings, 2 fixing screws
Võimsustarve	3 W=5 VA~
Korpus	Aluminium, anodised
Siiber	Stainless steel
Tihendusmaterjal	NBR



## Vihje

Lisaandmed saate soovi korral.

## Kirjeldus

3/2 and 5/2-way spool valves, monostable, with air purging function and pneumatic spring return. With latching manual operator and optional outgoing air restriction.

Two or three-piece service units with excellent flow rates in modern design. <br>Lockable diaphragm pressure regulator with secondary ventilation, oil can be filled without interrupting operation.<br>

## Artikkel

Märgistus	Pinge	Ühendus	DN	Läbivool (L/min)
K- 07 15 00 03	230 V, 50 Hz	G 1/4	7	1250
K- 07 15 00 04	24 V DC	G 1/4	7	1250