

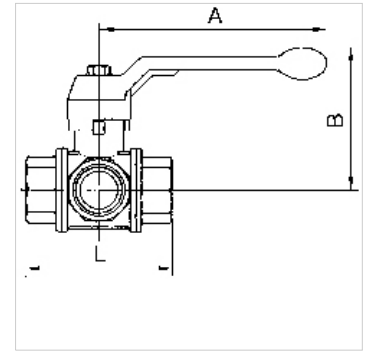
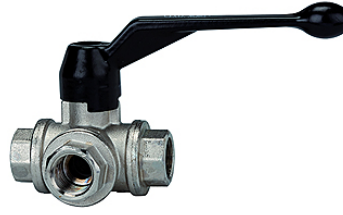
K-3 BKR T VA LEICHT

3-way ball valves, T-bore, lightweight type

HANSA FLEX

Omadused

| | |
|------------------|---------------------------|
| Keeme kirjeldus | Rp thread acc. to ISO 7-1 |
| Aine temperatuur | -15 °C to max. +100 °C |
| Tihendusmaterjal | PTFE |
| Vedru | Stainless-steel |
| Korpus ja kuul | Nickel-plated brass |
| Käsihoob | Aluminium, painted black |



Vihje

Lisaandmed saate soovi korral.

Kirjeldus

Sealing on all sides with T-bore. In contrast to the 1084 series, the lever of this model can only be turned 90° rather than 180°. Only two valve positions are therefore possible instead of four.

Artikkel

| Märgistus | DN | Keere | A (mm) | B (mm) | Kuuli ava | L (mm) | max tööõhk 20 °C juures (bar) |
|----------------|----|----------|-----------|-----------|-----------|-----------|----------------------------------|
| K- 07 30 19 68 | 15 | Rp 1/2 | 130,0 | 85,0 | 13 | 80,0 | 40 |
| K- 07 30 19 69 | 20 | Rp 3/4 | 160,0 | 98,0 | 18 | 96,0 | 40 |
| K- 07 30 19 70 | 25 | Rp 1 | 160,0 | 102,0 | 23 | 113,0 | 25 |
| K- 07 30 19 71 | 32 | Rp 1 1/4 | 195,0 | 121,0 | 29 | 130,0 | 16 |
| K- 07 30 19 72 | 40 | Rp 1 1/2 | 195,0 | 125,0 | 35 | 147,0 | 16 |
| K- 07 30 19 73 | 50 | Rp 2 | 235,0 | 141,0 | 44 | 169,0 | 16 |