

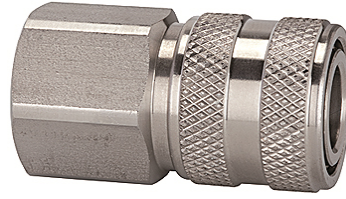
# K-SVKM NW 7,2 IG VA

Quick disconnect couplings DN 7.2, stainless steel, female

**HANSA FLEX**

## Omadused

Töörõhk	1 - 35 bar and rough vacuum
Õhu läbivool	1.000 l/min (at 6 bar and $\Delta p = 0.5$ bar)
Aine temperatuur	-25 °C to +200 °C
Korpus, hüls, ventiilikorpus	Stainless steel 1.4305
Vedru, vedruseib	Stainless steel 1.4310
Lukustustihvt	Stainless steel 1.4401
Tihendusmaterjal	FKM



## Vihje

Lisaandmed saate soovi korral.

## Kirjeldus

Classic standard coupling type, one side sealing, made of stainless steel. The closed sleeve protects the coupling from dirt. We recommend the use of stainless steel plugs and stems!

## Artikkel

Märgistus	Ühendus	Pikkus (mm)	SW (mm)
K- 07 35 07 62	G 1/4 female	43,0	22
K- 07 35 07 63	G 3/8 female	43,0	22
K- 07 35 07 64	G 1/2 female	46,0	24

## Täiendavad elemendid

K-NIPPEL KUPPL NW7 AG VA 2	Plugs for couplings DN 7.2 - DN 7.8, stainless steel 1.4305, male
K-NIPPEL KUPPL NW7 IG VA 1	Plugs for couplings DN 7.2 - DN 7.8, stainless steel 1.4305, female
K-TUE 7,2 7,8 VA 2	Stems for couplings DN 7.2 - DN 7.8, stainless steel 1.4305