

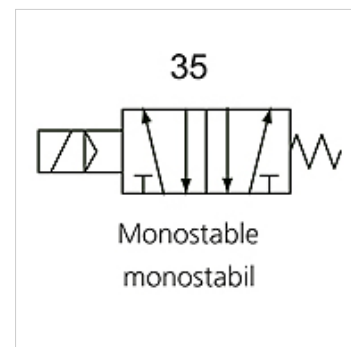
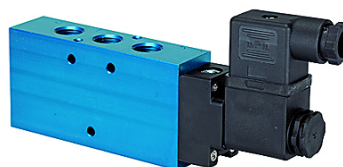
K-WV 5/2 EINS ELEKTRO

5/2-way spool valves, single solenoid

HANSA FLEX

Omadused

Funktsioon	5/2-way
Töörõhk	2.5 - 10 bar; Max. vacuum 10 bar (external pilot air)
min töörõhk	2,5 bar
Temperatuuri ulatus	-10 °C to +60 °C
Läbivool 6 bar ja 10 bar	1500 NI/min (G 1/4), 4600 NI/min (G 1/2)
Elektriühendus	Coupler plug PG 9 - form B
Kaitse tüüp	IP 65 (DIN 46244)
Korpus	Anodised aluminium, blue
Kolbsiiber	Stainless steel
Tihendusmaterjal	NBR



Vihje

Lisaandmed saate soovi korral.

Kirjeldus

This valve design, featuring the Tapered Tee Seal®, offers the ability to run without lubrication and supports almost any compressed air quality. The valves are largely resistant to dirt and can thus also be used under extreme conditions without any problems. Leakage is now a thing of the past and the spool no longer sticks, even after long idle periods.

Artikkel

Märgistus	Ühendus	Pinge	DN	Lülituspildi number	Juhtimine
K- 07 15 02 21	G 1/4	24 V DC	8	35	
K- 07 15 02 22	G 1/2"	24 V DC	15	35	
K- 07 15 02 23	G 1/4	230 V AC, 50 Hz	8	35	
K- 07 15 02 24	G 1/2"	230 V AC, 50 Hz	15	35	