

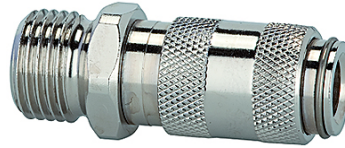
# K-SVKM NW 2,7 AG VA

Quick disconnect couplings DN 2.7, stainless steel 1.4404, male

**HANSA FLEX**

## Omadused

Töörõhk	0 - 35 bar, maximum static working pressure (non-pulsating)
Õhu läbivool	165 l/min (at 6 bar and $\Delta p = 0.5$ bar)
Aine temperatuur	-15 °C to +200 °C
Korpus, hüls, ventiilikorpus	Stainless steel 1.4404
Vedru, vedruseib, kuulid	Stainless steel 1.4404
Tihendusmaterjal	FKM



## Vihje

Lisaandmed saate soovi korral.

## Kirjeldus

One-hand quick disconnect couplings, one side sealing, extremely compact with a large bore and only a small pressure drop. Ideal for: Medical equipment, chemical and pharmaceutical industry, laboratories, plant construction and butchers.

## Artikkel

Märgistus	Ühendus	Pikkus (mm)	SW (mm)
K- 07 35 12 45	M 5 male	26,0	9
K- 07 35 12 46	G 1/8 male	28,0	11