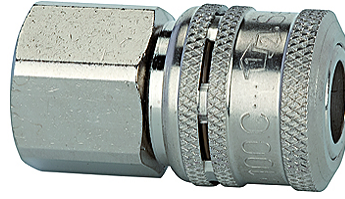


K-LKM S NW7,2 IG

Safety couplings DN 7.2, female

Omadused

Töörõhk	0 - 35 bar, maximum static working pressure (non-pulsating)
Õhu läbivool	1.100 l/min (at $\Delta p = 0.5$ bar)
Aine temperatuur	-30 °C to +100 °C
Korpus, hüls, ventiilikorpus	Nickel-plated brass
Vedru, kuulid	Stainless-steel
Tihendusmaterjal	NBR



Vihje

Lisaandmed saate soovi korral.

Kirjeldus

One-hand safety coupling with double locking mechanism. Connection: Similar to standard couplings, simply by pressing the plug into the coupling. Disconnection: The first locking mechanism is accessible when the sleeve is pushed back. The coupling valve closes. Air can then be relieved from the plug side (hose). The second locking mechanism is released by actuating the unlocking sleeve again. The coupling can now be disconnected.

Artikkel

Märgistus	Ühendus	Pikkus (mm)	SW (mm)
K- 07 35 02 95	G 1/4 female	46,0	22
K- 07 35 02 96	G 3/8 female	46,0	22
K- 07 35 02 97	G 1/2 female	49,0	24

Täiendavad elemendid

K-NIPPEL KUPPL NW7 AG VZ	Plugs for couplings DN 7.2 - DN 7.8, hardened, galvanised steel, male
K-NIPPEL KUPPL NW7 IG VZ 1	Plugs for couplings DN 7.2 - DN 7.8, hardened and galvanised steel, female
K-TUE 7,2 7,8 ST VZ 1	Stems for couplings DN 7.2 - DN 7.8, hardened, galvanised steel,