

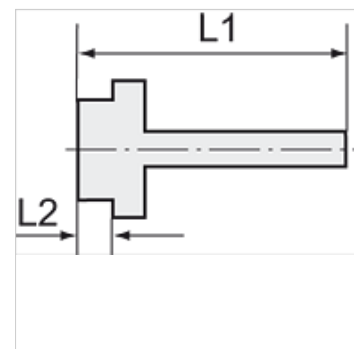
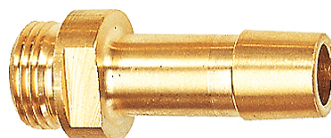
K-EST 12 MS

Male stems for coupling NW12 MS

HANSA FLEX

Omadused

Töörõhk	10 bar
Aine temperatuur	max. +90 °C
Keskonnatemperatuur	Max. +90 °C
Materjal	Brass with a bare metal surface



Vihje

The dimensions of the standard screw fittings may change slightly during the life of the catalogue as a result of optimisation processes.
Lisaandmed saate soovi korral.

Lisateave

Further types and dimensions on request.

Artikkel

Märgistus	Keere	Vooliku jaoks	L1 (mm)	L2 (mm)	SW
K- 07 35 00 88	G 1/2	LW 16 mm	58,0	10,0	20 mm