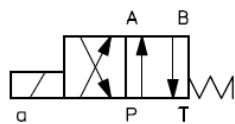


HK 42 C1 (7/G/Q/R)

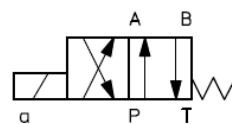
Magnetwegeventil NG10
Solenoid valve Size10

HANSA FLEX

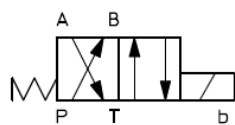
Schaltsymbole, Ausführungen / Symbols, Design



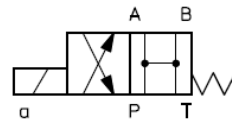
HK 42 3151 0101 C1



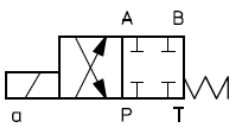
HK 42 3111 0101 C1



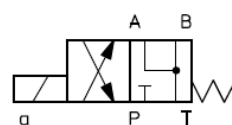
HK 42 3151 0201 C1



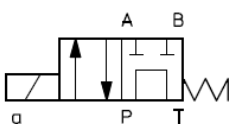
HK 42 3101 0601 C1



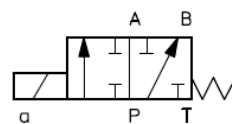
HK 42 3103 0601 C1



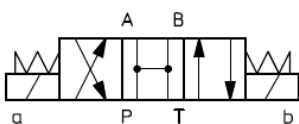
HK 42 3108 0601 C1



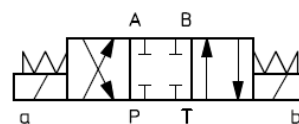
HK 42 3107 0601 C1



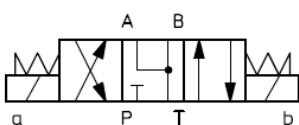
HK 42 3172 0101 C1



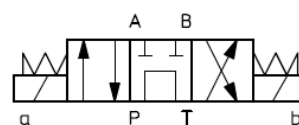
HK 42 3201 0302 C1



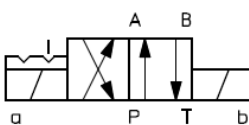
HK 42 3203 0302 C1



HK 42 3208 0302 C1



HK 42 3207 0302 C1



HK 42 3751 0902 C1

HK 42 C1 (7/G/Q/R)

Magnetwegeventil NG10
Solenoid valve Size10



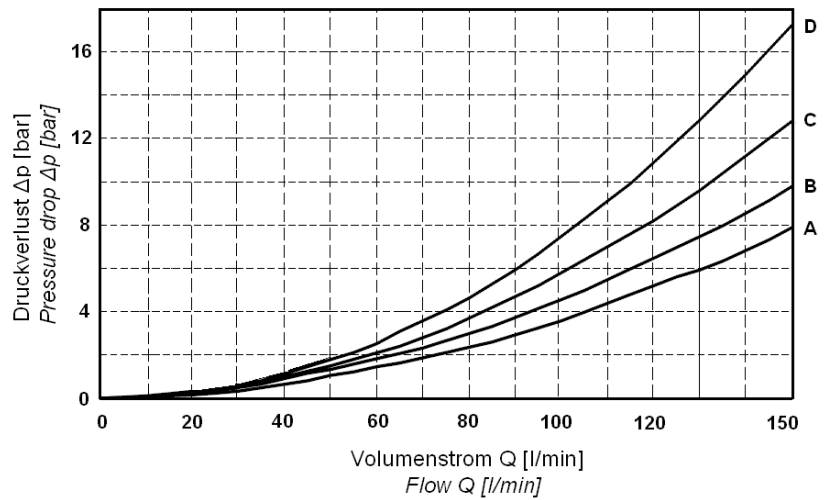
Kolbentypen, Durchflussrichtungen, Q/Δp – Kennlinien / Spool type, flow direction, Q/Δp - diagram

HK 42 C1 (7/G/Q/R)

Durchflussrichtung Flow direction				
Kolbentyp Spool type	P→A	P→B	A→T	B→T
01	D	D	A	A
03	D	D	C	C
07	D	D	D	D
08	D	D	B	B
11	D	D	B	B
51	D	D	C	C
72	C	D	-	-

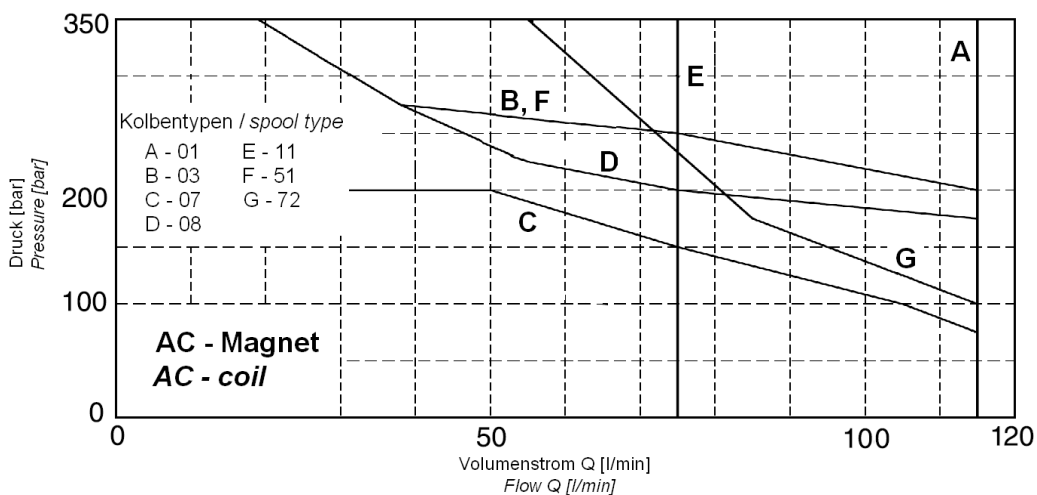
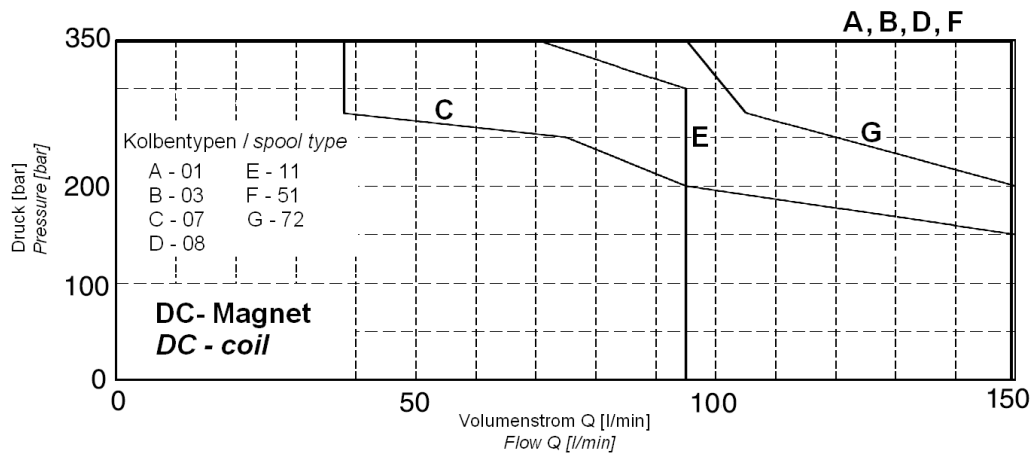
Q/Δp Diagramm

Q/Δp Diagram



Diagramme, Kennlinien / Diagram, chart

Schaltleistungsgrenzen / Operating limits

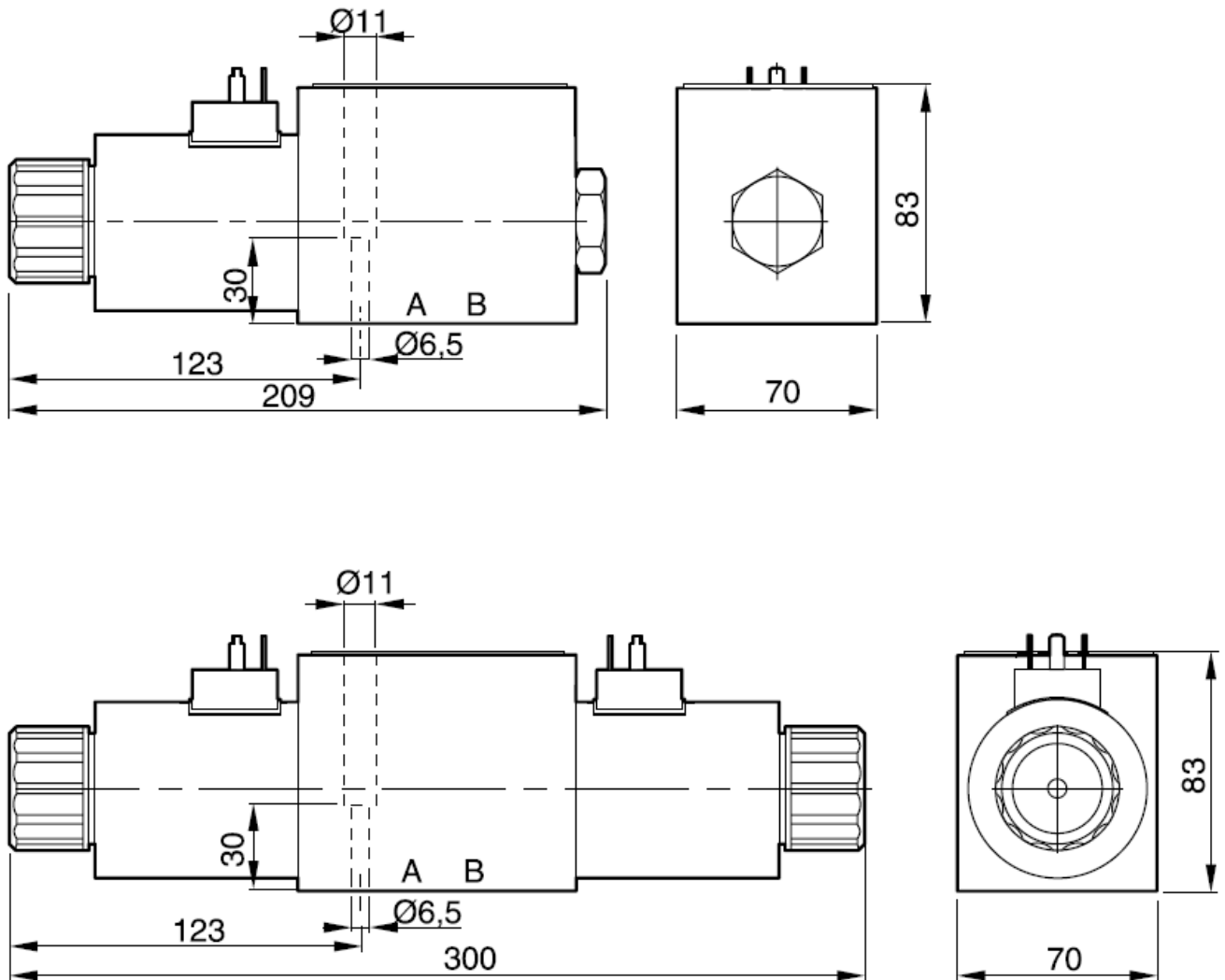


HK 42 C1 (7/G/Q/R)

Magnetwegeventil NG10
Solenoid valve Size10

HANSA FLEX

Abmessungen / Dimensions



Ventil mit DC-Magneten

Valve with DC-coils

Schraubensatz: 4 Inbusschrauben M6x40 12.9

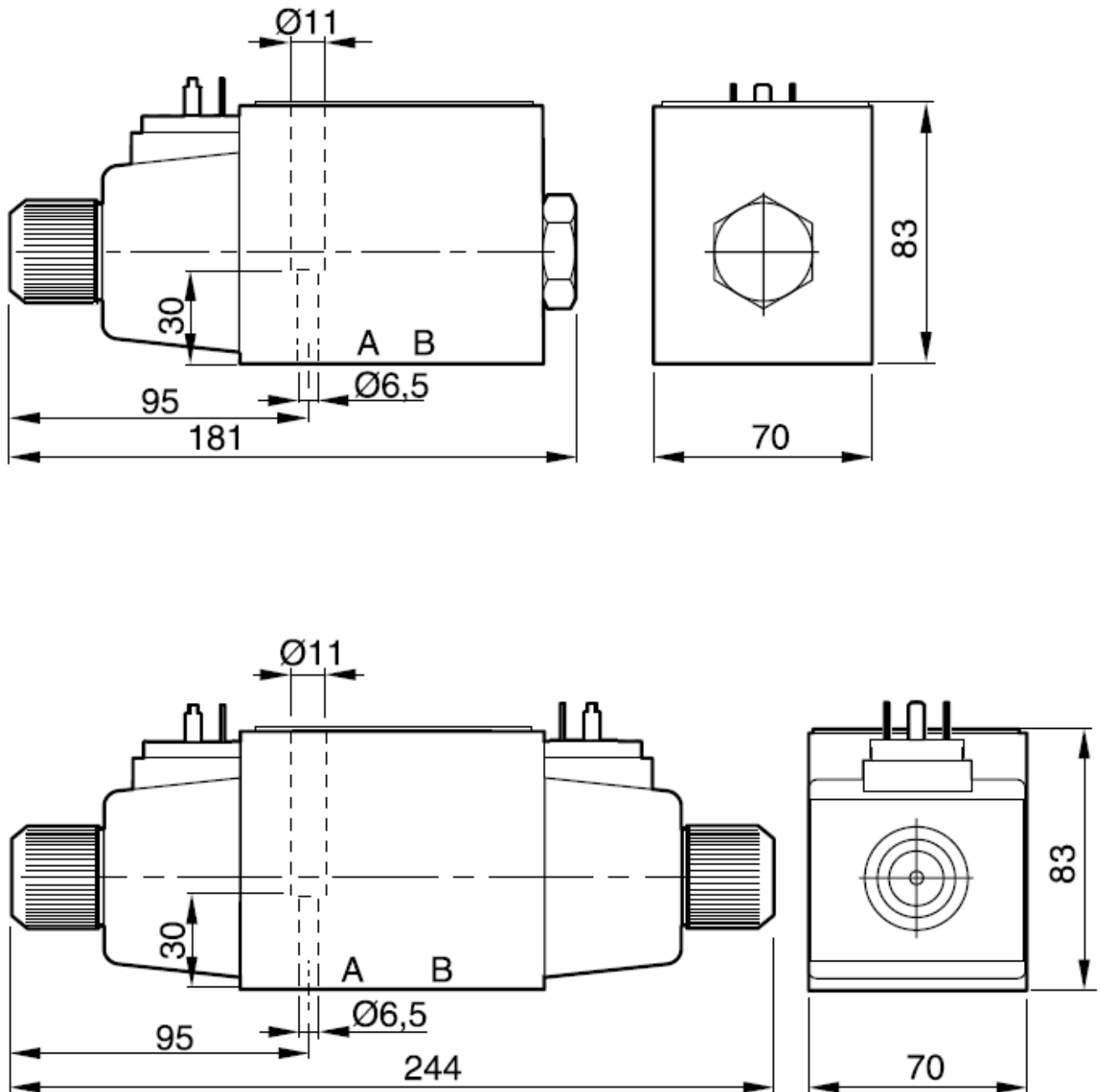
Screw set: 4 socket head screws M6x40 12.9

HK 42 C1 (7/G/Q/R)

Magnetwegeventil NG10
Solenoid valve Size10

HANSA FLEX

Abmessungen / Dimensions



Ventil mit AC-Magneten

Valve with AC-coils

Schraubensatz: 4 Inbusschrauben M6x40 12.9

Screw set: 4 socket head screws M6x40 12.9