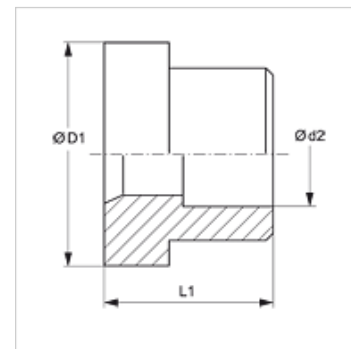


## Caractéristiques

|                       |                 |
|-----------------------|-----------------|
| Construction          | Soldered socket |
| Conception            | droit           |
| Matériau              | Acier           |
| Traitement de surface | huilé           |



## Article

| Désignation    | Ø d2<br>(mm) | Ø D1<br>(mm) | L1<br>(mm) |
|----------------|--------------|--------------|------------|
| LOET 06 DKF 06 | 6            | 13,0         | 10,0       |
| LOET 10 DKF 08 | 8            | 16,0         | 10,0       |
| LOET 10 DKF 10 | 10           | 16,0         | 10,0       |
| LOET 13 DKF 12 | 12           | 19,0         | 10,0       |
| LOET 16 DKF 14 | 14           | 23,0         | 11,0       |
| LOET 16 DKF 15 | 15           | 23,0         | 11,0       |
| LOET 16 DKF 16 | 16           | 23,0         | 11,0       |
| LOET 20 DKF 18 | 18           | 28,0         | 14,0       |
| LOET 20 DKF 20 | 20           | 28,0         | 14,0       |
| LOET 20 DKF 22 | 22           | 28,0         | 14,0       |
| LOET 25 DKF 25 | 25           | 34,0         | 16,0       |
| LOET 32 DKF 30 | 30           | 41,0         | 16,0       |
| LOET 32 DKF 32 | 32           | 41,0         | 16,0       |
| LOET 40 DKF 35 | 35           | 49,0         | 16,0       |
| LOET 40 DKF 38 | 38           | 49,0         | 16,0       |

Ø d2 = diamètre extérieur du tube