

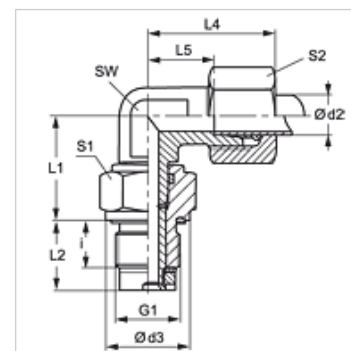
GVR 90

Raccord tournant, coude 90°, palier lisse

HANSA FLEX

Caractéristiques

| | |
|------------------------------|---|
| Raccord 1 | Filetage extérieur BSP cylindrique |
| Étanchéité 1 | Forme E |
| Raccord 2 | filet ext. métrique cylindrique |
| Étanchéité 2 | Cône intérieur 24° |
| Construction | Raccord tournant (raccord à visser) |
| Ajout de construction | Palier lisse |
| Conception | Coude 90° |
| Fourniture | Manchon (sans écrou-raccord et sans bague coupante) |
| Matériau | Acier |
| Traitement de surface | revêtement galvanisé |



Remarque

Veuillez vous reporter aux caractéristiques techniques des raccords pour tubes pour de plus amples informations sur le montage, les pressions et températures de service autorisées.

Article

| Désignation | Série | Pression de service en bar | Ø d2 (mm) | G1 | d3 (mm) | i (mm) | L1 (mm) | L2 (mm) | L4 (mm) | L5 (mm) | SW (mm) | S1 | S2 |
|-----------------------|-------|----------------------------|--------------|--------------|------------|-----------|------------|------------|------------|------------|------------|----|----|
| GVR 90 NW 04 HL 1/4 | L | PN 40 | 6 | G 1/4" -19 | 19 | 12 | 20,0 | 18,0 | 27 | 12,0 | 12 | 19 | 14 |
| GVR 90 NW 06 HL | L | PN 40 | 8 | G 1/4" -19 | 19 | 12 | 21,0 | 18,0 | 29 | 14,0 | 12 | 19 | 17 |
| GVR 90 NW 08 HL 3/8 | L | PN 40 | 10 | G 3/8" -19 | 22 | 12 | 26,0 | 18,0 | 30 | 15,0 | 14 | 24 | 19 |
| GVR 90 NW 10 HL 1/2 | L | PN 40 | 12 | G 1/2" -14 | 27 | 14 | 27,0 | 21,0 | 32 | 17,0 | 17 | 27 | 22 |
| GVR 90 NW 13 HL 3/4 | L | PN 40 | 15 | G 3/4" -14 | 32 | 16 | 33,0 | 24,0 | 36 | 21,0 | 19 | 32 | 27 |
| GVR 90 NW 16 HL 1 | L | PN 40 | 18 | G 1" -11 | 40 | 18 | 37,5 | 27,5 | 40 | 23,5 | 27 | 41 | 32 |
| GVR 90 NW 20 HL 1 | L | PN 40 | 22 | G 1" -11 | 40 | 18 | 39,5 | 27,5 | 44 | 27,5 | 27 | 41 | 36 |
| GVR 90 NW 25 HL 1 1/4 | L | PN 40 | 28 | G 1 1/4" -11 | 50 | 20 | 44,0 | 31,0 | 47 | 30,5 | 36 | 50 | 41 |
| GVR 90 NW 32 HL 1 1/2 | L | PN 40 | 35 | G 1 1/2" -11 | 55 | 22 | 54,0 | 35,0 | 56 | 34,5 | 41 | 55 | 50 |
| GVR 90 NW 03 HS | S | PN 100 | 6 | G 1/4" -19 | 19 | 12 | 21,0 | 18,0 | 31 | 16,0 | 12 | 19 | 17 |
| GVR 90 NW 04 HS | S | PN 100 | 8 | G 1/4" -19 | 19 | 12 | 22,0 | 18,0 | 32 | 17,0 | 14 | 19 | 19 |
| GVR 90 NW 06 HS | S | PN 100 | 10 | G 3/8" -19 | 22 | 12 | 27,0 | 18,0 | 34 | 17,5 | 17 | 24 | 22 |
| GVR 90 NW 08 HS 1/2 | S | PN 100 | 12 | G 1/2" -14 | 27 | 14 | 28,0 | 21,0 | 38 | 21,5 | 17 | 27 | 24 |
| GVR 90 NW 13 HS 3/4 | S | PN 100 | 16 | G 3/4" -14 | 32 | 16 | 34,0 | 24,0 | 43 | 24,5 | 24 | 32 | 30 |
| GVR 90 NW 16 HS 1 | S | PN 100 | 20 | G 1" -11 | 40 | 18 | 39,5 | 27,5 | 48 | 26,5 | 27 | 41 | 36 |
| GVR 90 NW 20 HS | S | PN 100 | 25 | G 1" -11 | 40 | 18 | 42,5 | 27,5 | 54 | 30,0 | 36 | 41 | 46 |
| GVR 90 NW 25 HS | S | PN 100 | 30 | G 1 1/4" -11 | 50 | 20 | 48,0 | 31,0 | 62 | 35,5 | 41 | 50 | 50 |
| GVR 90 NW 32 HS | S | PN 100 | 38 | G 1 1/2" -11 | 55 | 22 | 55,0 | 35,0 | 72 | 41,0 | 50 | 55 | 60 |

Série : LL = très léger L = léger S = lourd – PN = Pression nominale PB = Pression de service max. – Ø d2 = diamètre extérieur du tube