

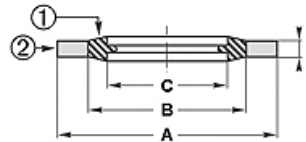
08BS 9

Joint USIT, centré 08BS9

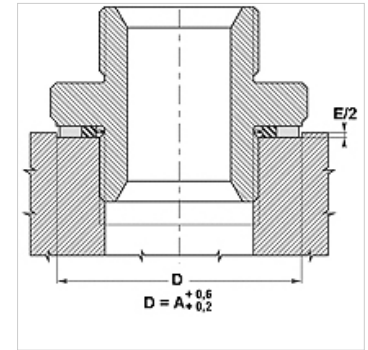
HANSA FLEX

Caractéristiques

| | |
|-----------------------|---|
| Construction | Joint USIT |
| Ajout de construction | à auto-centrage |
| Température min. | -30 °C |
| Température max. | 110 °C |
| Montage | avec vis et pièces de raccordement |
| Matériau | (1) NBR (2) acier au carbone cadmié ou passivé |



| Toleranz / Tolerance | | | | |
|----------------------|------------|---------|---------|---------|
| Baureihe / Range | A | B | C | E |
| 9; 92; 93 | +0,13 0 | +/-0,13 | +/-0,13 | +/-0,15 |



Description

Étanchéité parfaite.

Nombreuses possibilités d'application en statique et en dynamique, torsion impossible en cas de mouvements rotatifs.

Nombreuses possibilités d'application en fonction du matériau.

Existe pour filetages métriques, Withworth et BSP.

Article

| Désignation | pour filet | pour filetage | pour filet | A | A | B | B | C | E | C | E | Pression PB |
|-------------|------------|---------------|------------|-------|------|-------|------|-------|------|------|------|-------------|
| | | | | (mm) | (mm) | (mm) | (mm) | (mm) | (mm) | (mm) | (mm) | (bar) |
| 08BS 920 | G 1/8" | 3/8 po. | - | 15,88 | - | 11,84 | - | 10,37 | 2,10 | - | - | 1500 |
| 08BS 921 | G 1/4" | 1/2 po. | - | 20,57 | - | 15,21 | - | 13,74 | 2,10 | - | - | 1550 |
| 08BS 923 | G 3/8" | - | - | 23,80 | - | 18,75 | - | 17,28 | 2,10 | - | - | 1260 |
| 08BS 925 | G 1/2" | 13/16 po. | - | 28,58 | - | 23,10 | - | 21,54 | 2,40 | - | - | 1150 |
| 08BS 926 | G 5/8" | 7/8 po. | - | 31,75 | - | 24,97 | - | 23,49 | 2,40 | - | - | 1250 |
| 08BS 927 | G 3/4" | 1 po. | - | 34,93 | - | 28,53 | - | 27,05 | 2,40 | - | - | 1060 |
| 08BS 929 | G 7/8" | 1.3/16 po. | - | 38,10 | - | 32,29 | - | 30,81 | 2,40 | - | - | 900 |
| 08BS 930 | G 1" | 1.5/16 po. | - | 42,80 | - | 36,88 | - | 33,89 | 3,40 | - | - | 790 |
| 08BS 932 | G 1 1/4" | 1.5/8 po. | - | 52,38 | - | 45,93 | - | 42,93 | 3,40 | - | - | 690 |
| 08BS 933 | G 1 1/2" | 1.7/8 po. | - | 58,60 | - | 51,39 | - | 48,44 | 3,40 | - | - | 690 |
| 08BS 936 | G 2" | - | - | 73,03 | - | 63,63 | - | 60,53 | 3,40 | - | - | 700 |
| 08BS 938 | G 2,1/4" | - | - | 79,50 | - | 69,98 | - | 66,68 | 3,25 | - | - | 670 |
| 08BS 939 | G 2,1/2" | - | - | 90,30 | - | 79,38 | - | 76,08 | 3,25 | - | - | 680 |
| 08BS 9202 | - | - | M 4 | 7,00 | - | 5,40 | - | 4,50 | 1,00 | - | - | 1270 |
| 08BS 9204 | - | - | M 5 | 10,00 | - | 7,40 | - | 5,70 | 1,00 | - | - | 1510 |
| 08BS 9203 | - | - | M 5 | 9,00 | - | 6,80 | - | 5,70 | 1,00 | - | - | 1400 |
| 08BS 9206 | - | - | M 6 | 10,00 | - | 8,00 | - | 6,70 | 1,00 | - | - | 1130 |
| 08BS 9207 | - | - | M 6 | 11,00 | - | 8,20 | - | 6,70 | 1,00 | - | - | 1510 |
| 08BS 9212 | - | - | M 8 | 13,00 | - | 10,00 | - | 8,70 | 1,00 | - | - | 1330 |
| 08BS 9213 | - | - | M 8 | 14,00 | - | 10,40 | - | 8,70 | 1,00 | - | - | 1550 |
| 08BS 9215 | - | - | M 9 | 13,30 | - | 10,50 | - | 9,30 | 1,00 | - | - | 1200 |
| 08BS 9216 | - | - | M 10 | 16,00 | - | 12,00 | - | 10,35 | 2,00 | - | - | 1470 |
| 08BS 9217 | - | - | M 10 | 16,00 | - | 12,40 | - | 10,70 | 1,50 | - | - | 1350 |
| 08BS 9218 | - | - | M 10 | 18,00 | - | 12,40 | - | 10,70 | 1,50 | - | - | 1880 |
| 08BS 9221 | - | - | M 11 | 19,10 | - | 13,50 | - | 11,80 | 1,50 | - | - | 1250 |
| 08BS 9222 | - | - | M 12 | 18,00 | - | 14,40 | - | 12,70 | 1,50 | - | - | 1250 |
| 08BS 9225 | - | - | M 13 | 22,00 | - | 15,40 | - | 13,70 | 1,50 | - | - | 1810 |
| 08BS 9227 | - | - | M 14 | 22,00 | - | 16,40 | - | 14,70 | 1,50 | - | - | 1510 |
| 08BS 9229 | - | - | M 16 | 24,00 | 24,0 | 18,40 | 18,4 | 16,70 | 1,50 | 16,7 | 1,5 | 1400 |
| 08BS 9230 | - | - | M 17 | 24,00 | - | 19,20 | - | 17,40 | 1,50 | - | - | 1150 |
| 08BS 9232 | - | - | M 18 | 26,00 | - | 20,40 | - | 18,70 | 1,50 | - | - | 1275 |
| 08BS 9233 | - | - | M 20 | 28,00 | - | 22,40 | - | 20,70 | 1,50 | - | - | 1150 |
| 08BS 9236 | - | - | M 22 | 30,00 | - | 24,40 | - | 22,70 | 2,00 | - | - | 1100 |
| 08BS 9238 | - | - | M 24 | 32,00 | - | 26,40 | - | 24,70 | 2,00 | - | - | 1050 |
| 08BS 9239 | - | - | M 26 | 35,00 | - | 28,40 | - | 26,70 | 2,00 | - | - | 1050 |
| 08BS 9240 | - | - | M 27 | 36,00 | - | 29,00 | - | 27,70 | 2,00 | - | - | 1130 |
| 08BS 9243 | - | - | M 33 | 42,00 | - | 35,80 | - | 33,70 | 2,00 | - | - | 900 |
| 08BS 9245 | - | - | M 36 | 46,00 | - | 38,80 | - | 36,70 | 2,00 | - | - | 890 |