

K-STROEV AG UNTEN

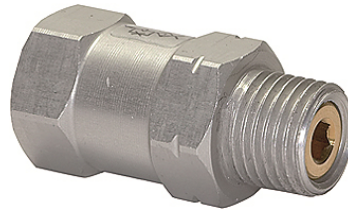
Check valves, male thread at bottom

HANSA FLEX

Caractéristiques

Construction Ball seat valve (ball in brass seat)

Boîtier Aluminium



Remarque

Autres informations sur demande.

Description

Check valves close the vacuum line if the suction pad is not covered, thus maintaining the vacuum. The valves are protected against dirt by a replaceable sieve. This valve series is suitable for all suction pads in our standard range.

Article

Désignation	Filetage 1	Filetage 2	Longueur (mm)
K- 07 45 01 55	G 1/8 female	G 1/8 male	26,0
K- 07 45 01 54	G 1/4 female	G 1/4 male	26,0
K- 07 45 01 53	G 1/2 female	G 1/2 male	29,0