

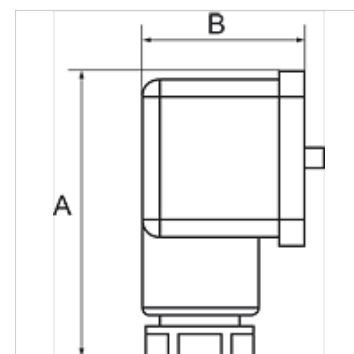
K-DRS ELK GERAETESTECKER

Pressure switches, connection with plug connector, type A acc. to DIN 43650

HANSA FLEX

Caractéristiques

Domaine d'utilisation	Pneumatic applications
Fréquence de commutation	200/min.
Tension de commutation	max. 250 V AC / 28 V DC
Indice de protection	IP 65 (DIN 43650), IP 67 (M 12 x 1)
Plage de température	-10 °C to +80 °C
Capuchon mobile	Aluminium, powder-coated
Boîtier	Special die-cast material
Membrane, joint d'étanchéité	NBR



Remarque

Autres informations sur demande.

Description

For converting pneumatic to electrical signals. Designed for use in rough vacuum applications (technical vacuum). Universal switch type, suitable as NC, NO or changeover contact. These devices are free from paint-wetting impairment substances (PWIS).

Article

Désignation	Raccord	Plage de réglage	A (mm)	B (mm)
K- 07 30 28 45	G 1/4	0,2 - 2,0 bar	48,0	28,0
K- 07 30 28 46	G 1/4	0,5 - 8,0 bar	48,0	28,0
K- 07 30 28 47	G 1/4	1,0 - 16,0 bar	48,0	28,0