

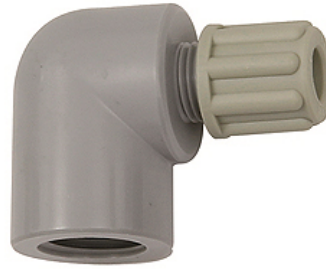
K-W90 GAM IG

Female elbows with female G thread

HANSA FLEX

Caractéristiques

Pression de service	Dependent on operating temperature; Max. 10 bar (at 20 °C); Max. 1 bar (at 60 °C)
Raccord fileté	Polyamide (PA)
Anneau de matrice	Polypropylene (PP)
Écrou	Polypropylene (PP)



Remarque

Autres informations sur demande.

Description

Manufactured from high impact-resistant, UV-stabilised engineering plastic, extremely resistant to weathering. Good chemical resistance to benzene, diesel oil, fuel oil and alkalis.
Not suitable for use with acids.

Article

Désignation	Filets	pour tuyau	L1 (mm)	L2 (mm)
K- 07 40 32 98	G 1/8	4 mm / 6 mm	26,0	17,0
K- 07 40 32 99	G 1/8	6 mm / 8 mm	29,0	17,0
K- 07 40 33 00	G 1/4	4 mm / 6 mm	29,0	20,0
K- 07 40 33 01	G 1/4	6 mm / 8 mm	32,0	20,0
K- 07 40 33 02	G 1/4	8 mm / 10 mm	35,0	20,0