

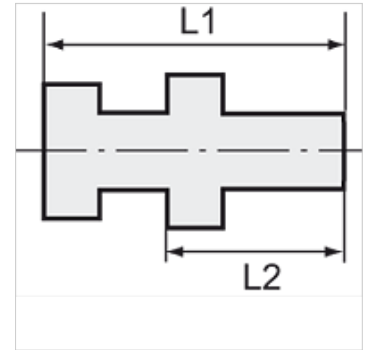
# K-SV MS NI

Bulkhead connectors - nickel-plated brass

**HANSA FLEX**

## Caractéristiques

Température de service	Max. 150 °C
Pression	Max. 60 bar
Matériau	Laiton nickelé



## Remarque

The dimensions of the standard screw fittings may change slightly during the life of the catalogue as a result of optimisation processes.  
Autres informations sur demande.

## Description

Suitable for air, water, oil, steam, etc.

## Informations supplémentaires

Further types and dimensions on request.

## Article

Désignation	Filetage extérieur	Filetage intérieur	L1 (mm)	L2 (mm)	SW1 (mm)	SW2 (mm)
K- 07 40 34 27	M 16 x 1.5	G 1/8	18,0	14,0	22	19
K- 07 40 34 28	M 20 x 1.5	G 1/4	26,0	21,0	24	27
K- 07 40 34 29	M 26 x 1.5	G 3/8	26,0	21,0	32	30
K- 07 40 34 30	M 28 x 1.5	G 1/2	33,5	27,0	32	36