

# K-HS ALU BLAU

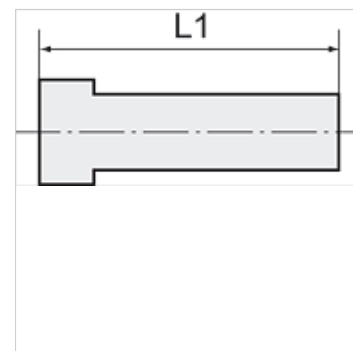
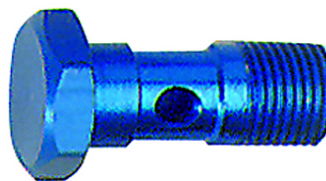
Aluminium banjo bolts

**HANSA FLEX**

## Caractéristiques

Pression de service 0 - 10 bar

Plage de température -10 °C to +60 °C



## Remarque

Autres informations sur demande.

## Article

Désignation	Filets	L1 (mm)	SW
K- 07 40 33 45	G 1/8	27,0	14 mm
K- 07 40 33 46	G 1/4	29,0	17 mm