

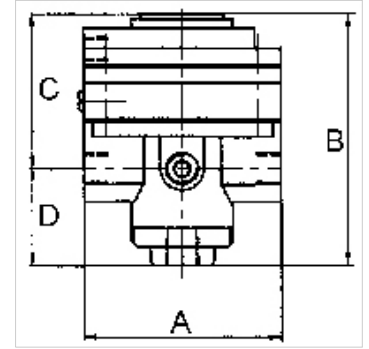
# K-PRAEZI DRUCKREGL PNEU FERN

Precision pressure regulators

**HANSA FLEX**

## Caractéristiques

Pression d'entrée	Max. 16 bar
Température de fluide	max. 60 °C
Température ambiante	Max. 60 °C
Médiums	Micro-filtered, unoiled compressed air (0.01 µm)
Raccord pour manomètre	G 1/4
Débit	3000 l/min
Raccord de ventilation	G 3/8 (for mounting a silencer)
Pression de commande	Max. 10 bar
Raccord pneumatique de commande	G 1/8
Matériau étanche	NBR
Boîtier	Die-cast zinc, painted black
Consommation d'air interne	6 l/min at Pin = 16 bar



## Remarque

Attention! A set of wearing parts cannot be supplied! These pressure regulators may only be opened in the factory! The given flow rates are based on the following parameters: 3000 l/min: P1: 5 bar, P2: 3 bar,  $\Delta p \leq 0,1$  bar.

Autres informations sur demande.

## Description

With high flow rate and large secondary relief port. Pneumatically controlled diaphragm pressure regulators with large secondary relief port for applications requiring an extremely accurate working pressure, especially at high flow rates. We recommend our »multifix« series of pilot controllers.

## Informations supplémentaires

1500 l/min: P1: 10 bar, P2: 7 bar,  $\Delta p \leq 0.1$  bar.

## Article

Désignation	Filets	Plage de régulation	A (mm)	B	C (mm)	D (mm)
K- 07 25 09 35	G 1/2	0.05 - 7 bar (max. 10 bar)	82,0	108,0 mm	64,5	43,5

## Pièces de rechange

K-HALTERBAUSATZ STANDARD	Holder
K-KM MS	Hexagonal lock nuts, brass
K-SCHALLDAEPFER VYON	Vyon silencers
K-FILTERELEMENT	Filter element
K-XV AGM 2	Double nipples, parallel male thread