

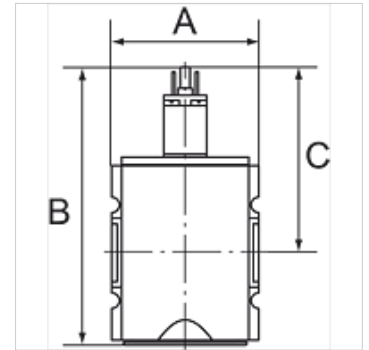
# K-WV 3/2 ELK 24 VDC HANSA

3/2-way valves, electrically operated, with 24 VDC / 2.5 W solenoid

**HANSA FLEX**

## Caractéristiques

|   |   |
|---|---|
| Pression d'entrée                               | 2 - 10 bar                                      |
| Plage de température                            | -10 °C to +50 °C                                |
| Médiums   | Air comprimé                                    |
| Puissance de serrage tension alternative 50 Hz  | 2,2 VA  |
| Durée de mise en circuit                        | ED 100 %  |
| Raccord électrique                              | Connector type C, ISO 15217, 2 poles +PE        |
| Puissance de maintien tension alternative 50 Hz | 1,6 VA  |
| Consommation de puissance courant continu       | 2,5 W   |
| Indice de protection                            | IP 65   |
| Filet de raccord                                | Material: Die-cast zinc                         |
| Boîtier   | Material: Grivory® (PA 66)                      |
| Mesure de la valeur du débit                    | At P2 = 6 bar, pressure drop $\Delta p = 1$ bar |



## Remarque

Autres informations sur demande.

## Description

Pneumatic systems or parts of systems can be switched on and off by means of an electrical signal. When they are switched off, the system is exhausted at the same time.

## Informations relatives à la commande

Valves are also available with coil 110 V AC, 50 Hz and in a pneumatically operated version. Please ask for more information.

## Article

| Désignation    | Filets | Fuite | Débit (L/min) | A (mm) | B        | C (mm) |
|----------------|--------|-------|---------------|--------|----------|--------|
| K- 07 25 11 05 | G 1/4  | 1/4   | 2000          | 52,0   | 117,8 mm | 84,8   |
| K- 07 25 11 06 | G 3/8  | 1/4   | 2000          | 52,0   | 117,8 mm | 84,8   |
| K- 07 25 11 31 | G 3/8  | 1/2   | 4500          | 63,0   | 150,3 mm | 93,8   |
| K- 07 25 11 32 | G 1/2  | 1/2   | 4500          | 63,0   | 150,3 mm | 93,8   |
| K- 07 25 11 37 | G 3/4  | 1/2   | 12500         | 85,0   | 177,7 mm | 110,7  |
| K- 07 25 11 38 | G 1    | 1/2   | 12500         | 85,0   | 177,7 mm | 110,7  |

## Accessoires

|                             |   |
|-----------------------------|---|
| K-SCHALLDAE SINTERBR S      | Silencers, sintered bronze, slotted                                 |
| K-SCHALLDAE SINTERBR GE MS1 | Silencers, sintered bronze, with brass hexagon nut and brass thread |

## Pièces de rechange

|                         |                            |
|-------------------------|----------------------------|
| K-HALTERBAUSATZ HANSA   | Holder HANSA               |
| K-VORSTEUERVENTIL HANSA | Replacement solenoid HANSA |
| K-GERAETESTECKER FORM C | Connector                  |