

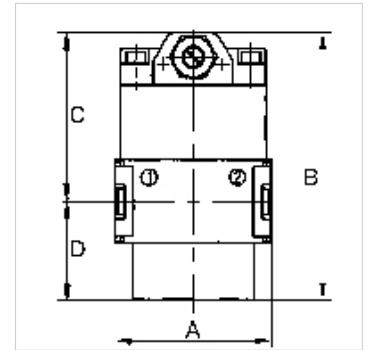
K-ANFAV MULTIFIX MINI

Start-up valves

HANSA FLEX

Caractéristiques

Pression d'entrée	Min. 2.5 bar, max. 16 bar
Température de fluide	max. 60 °C
Température ambiante	Max. 60 °C
Débit	1600 l/min
Matériau étanche	NBR
Boîtier	Die-cast zinc
Mesure de la valeur du débit	At P1 = 6 bar and pressure drop $\Delta p = 1$ bar



Remarque

If several devices in the »multifix-mini« Series are assembled together, the maximum working pressure is 12 bar.

Autres informations sur demande.

Description

Seat valves operated by secondary pressure for controlled pressurisation of pneumatic systems. The full cross-section of the regulator is opened at 50% of the input pressure. With adjustable restrictor!

Article

Désignation	Filets	A (mm)	B	C (mm)	D (mm)
K- 07 25 11 53	G 1/4	45,0	77,5 mm	48,5	29,0

Accessoires

K-HALTERBAUSATZ Holder

Pièces de rechange

K-KOPPELPAKET MEHR Coupling packet