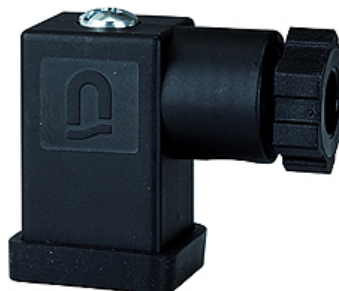


# K-GERAETESTECKER FORM C

Connector

**HANSA FLEX**



## Description

Connector

## Article

| Désignation    | Description | Gabarit |
|----------------|-------------|---------|
| K- 07 25 18 08 | Connector   | 1       |

## pièce de rechange pour les produits suivants

|                                   |  |
|-----------------------------------|--|
| K-WV 3/2 ELK 24 VDC HANSA         | 3/2-way valves, electrically operated, with 24 VDC / 2.5 W solenoid                          |
| K-WV 3/2 ELK 230 VAC / 50HZ HANSA | 3/2-way valves, electrically operated, with 230 VAC / 50 Hz solenoid                         |
| K-BEFUELLEINHEIT 24VDC HANSA      | Filling units, electrically operated, with 24 VDC / 2.5 W solenoid, adjustable filling time  |
| K-BEFUELLEINHEIT 230V AC HANSA    | Filling units, electrically operated, with 230 VAC / 5= Hz solenoid, adjustable filling time |