

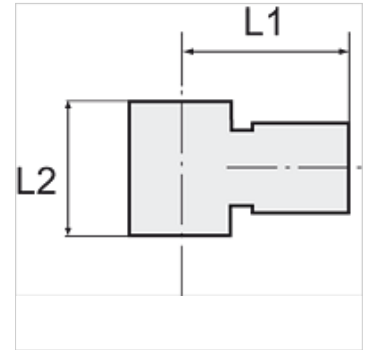
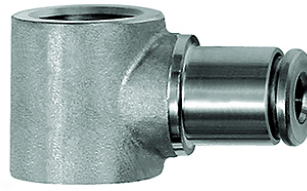
K-L-RINGSTUECK

Ring nipples, single

HANSA FLEX

Caractéristiques

| | |
|------------------------------------|---|
| Pression de service par impulsions | Max. 10 bar |
| Pression | Max. 15 bar (depending on pipe quality) |
| Matière première appropriée | PVDF, PTFE, stainless steel, PA, PU |
| Norme | G thread acc. to DIN EN ISO 228-1 |
| Température ambiante | -20 °C to max. +150 °C (depending on pipe quality and diameter) |
| Matériau | Acier inoxydable 1.4404 |
| Matériau étanche | FKM |



Remarque

Autres informations sur demande.

Description

For use with aggressive media and in areas with corrosive outside influences, in the food processing industry and in hygienic and sanitary applications.

Article

| Désignation | Filets | pour Ø ext. du tuyau | L1 (mm) | L2 (mm) |
|----------------|--------|----------------------|------------|------------|
| K- 07 40 47 10 | G 1/8 | 4 mm | 19,5 | 15,0 |
| K- 07 40 47 11 | G 1/8 | 6 mm | 22,0 | 15,0 |
| K- 07 40 47 12 | G 1/8 | 8 mm | 22,5 | 15,0 |
| K- 07 40 47 08 | G 1/4 | 6 mm | 23,5 | 17,0 |
| K- 07 40 47 09 | G 1/4 | 8 mm | 24,0 | 17,0 |
| K- 07 40 47 07 | G 1/4 | 10 mm | 27,0 | 17,0 |
| K- 07 40 47 13 | G 3/8 | 10 mm | 29,0 | 20,0 |
| K- 07 40 47 14 | G 3/8 | 12 mm | 31,0 | 20,0 |
| K- 07 40 47 06 | G 1/2 | 12 mm | 33,0 | 24,0 |