

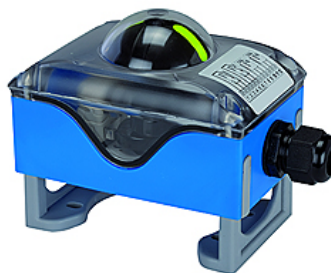
# K-ENDLAGEN-RUECKME KUNST M

End position feedback - plastic microswitch

**HANSA FLEX**

## Caractéristiques

Écrou de fixation de câble	M 20 x 1.5
Puissance de commutation mini	1 mA at 4 V DC
Puissance de commutation nominale	1 mA to 5 A at 250 V AC
Fonction de commutation	Changeover, silver-plated contacts
Indice de protection	IP 67, acc. to DIN EN 60529
Plage de température	-20 °C to +70 °C
Boîtier	Polyamide blue or black
Boulon	Stainless steel 1.4301
Arbre	Polyamide PA6, black
Couvercle	Polycarbonate, transparent
Pont de montage	PA6 with 30 % glass fibre
Joints	EPDM and NBR
Matériau étanche	NBR



## Remarque

Autres informations sur demande.

## Description

Robust type in a plastic housing, Universal indicator for NAMUR sizes 80 x 30 and 130 x 30, Height-adjustable feet that adapt to different pinion projections, ON / OFF position indicator also visible from a distance, Easy-to-adjust, self-locking trip cam

## Article

Désignation	Définition
K- 07 30 29 05	End position feedback, M 2 type with microswitch