

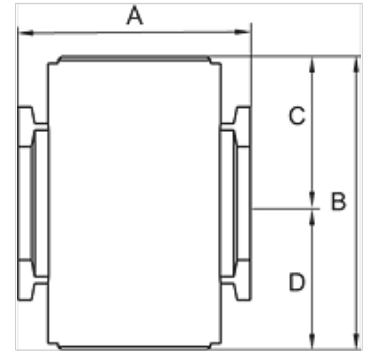
# K-VT 2 ABGAENGE G

Manifolds

**HANSA FLEX**

## Caractéristiques

Pression d'entrée	0 - 9 bar
Température de fluide	max. 70 °C
Température ambiante	Max. 70 °C
Matériau étanche	NBR
Boîtier	Die-cast aluminium
Autres indications	User manual on request



## Article

Désignation	Filets	A (mm)	B	C (mm)	D (mm)	Gabarit
K- 07 25 12 19	G 1/4	35,0	44,0 mm	22,0	22,0	200
K- 07 25 12 20	G 3/8	35,0	44,0 mm	22,0	22,0	200
K- 07 25 12 21	G 3/8	42,0	52,0 mm	26,0	26,0	300
K- 07 25 12 22	G 1/2	42,0	52,0 mm	26,0	26,0	300
K- 07 25 12 23	G 3/4	60,0	76,0 mm	38,0	38,0	600
K- 07 25 12 24	G 1	60,0	76,0 mm	38,0	38,0	600

## Accessoires

K-VERBINDUNGSELEMENTE	Connecting sets
K-WANDHALTER	Wall bracket