

K-VT 2 ABGAENGE G-MINI

Manifolds

HANSA FLEX

Caractéristiques

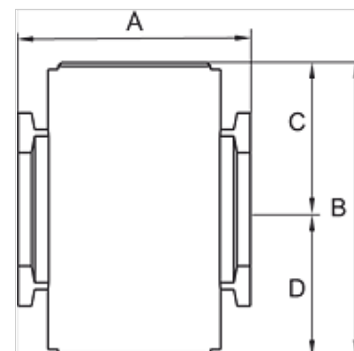
Pression d'entrée 0 - 9 bar

Température de fluide max. 70 °C

Température ambiante Max. 70 °C

Boîtier Die-cast aluminium

Autres indications User manual on request



Article

Désignation	Filets	A (mm)	B	C (mm)	D (mm)	Gabarit
K- 07 25 12 31	G 1/8	28,5	36,0 mm	18,0	18,0	200
K- 07 25 12 32	G 1/4	28,5	36,0 mm	18,0	18,0	200

Accessoires

K-VERBINDUNGELEMENTE Connecting sets

K-WANDHALTER Wall bracket