

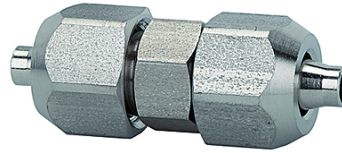
K-VERBINDER VA

Unions, stainless steel

HANSA FLEX

Caractéristiques

Domaine de pression	Max. 25 bar
Tuyaux recommandés	PTFE hose
Plage de température	-40 °C to +200 °C (depending on the hose quality and diameter)
Matériau	Acier inoxydable 1.4404
Joint d'étanchéité	Pure metal



Remarque

Autres informations sur demande.

Description

Supplied without seals. For use with corrosive media and at high temperatures. Screw fitting series made of stainless steel for all applications where compliance with strict tightness, pressure and temperature requirements is essential. The parts are manufactured without rubber seals, in other words they are ideal for very high temperatures or for use with corrosive liquids, e.g. in cases when FPM is no longer suitable.

Article

Désignation	pour tuyau	L1 (mm)	SW1 (mm)	SW2 (mm)
K- 07 40 30 23	6 mm / 4 mm	34,0	12	10
K- 07 40 30 24	8 mm / 6 mm	35,0	14	12
K- 07 40 30 22	10 mm / 8 mm	39,0	16	14