

K-T-STUECKE IG AG IG VA

Tees, female/male/female, stainless steel

HANSA FLEX

Caractéristiques

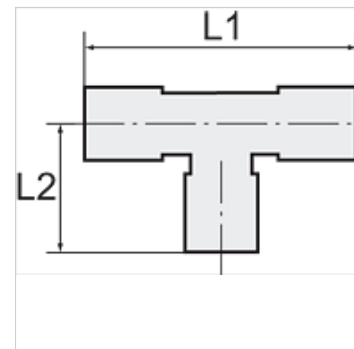
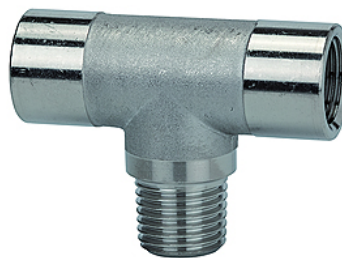
Température de service -20 °C to +150 °C

Domaine de pression Max. 150 bar

Filetage intérieur Parallel to DIN EN ISO 228-1

Matériau Acier inoxydable 1.4404

Filetage extérieur conical acc. DIN 2999



Remarque

Autres informations sur demande.

Article

| Désignation | Filets | L1 (mm) | L2 (mm) |
|----------------|---------|------------|------------|
| K- 07 40 10 76 | G/R 1/8 | 38,0 | 18,0 |
| K- 07 40 10 77 | G/R 1/4 | 46,0 | 25,5 |
| K- 07 40 10 78 | G/R 3/8 | 51,0 | 24,0 |
| K- 07 40 10 79 | G/R 1/2 | 64,0 | 30,0 |