

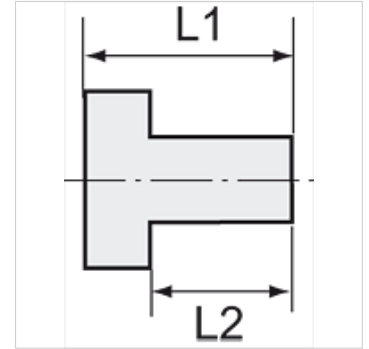
K-RD NIPPEL AGRK IGR MS NI

Reducing nipples, conical male thread, parallel female thread - nickel-plated brass

HANSA FLEX

Caractéristiques

Température de service	Max. 150 °C
Pression	Max. 60 bar
Matériau	Laiton nickelé



Remarque

The dimensions of the standard screw fittings may change slightly during the life of the catalogue as a result of optimisation processes.
Autres informations sur demande.

Description

Suitable for air, water, oil, steam, etc.

Informations supplémentaires

Further types and dimensions on request.

Article

Désignation	Filetage extérieur	Filetage intérieur	L1 (mm)	L2 (mm)	SW
K- 07 40 15 66	R 1/4	G 1/8	16,0	11,0	14 mm
K- 07 40 15 67	R 3/8	G 1/8	17,0	11,5	17 mm
K- 07 40 15 68	R 3/8	G 1/4	17,0	11,5	17 mm
K- 07 40 15 69	R 1/2	G 1/8	19,5	14,0	22 mm
K- 07 40 15 70	R 1/2	G 1/4	20,0	14,0	22 mm
K- 07 40 15 71	R 1/2	G 3/8	20,0	14,0	22 mm
K- 07 40 15 72	R 3/4	G 3/8	23,0	16,5	27 mm
K- 07 40 15 73	R 3/4	G 1/2	23,0	16,5	27 mm
K- 07 40 15 74	R 1	G 1/2	25,0	16,0	34 mm
K- 07 40 15 75	R 1	G 3/4	25,0	18,0	34 mm