

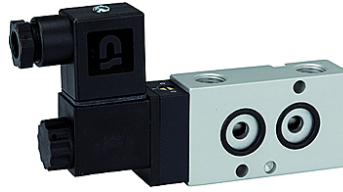
# K-WV 3/2 LB NAMUR

3/2-way spool valves with NAMUR style interface, NC

**HANSA FLEX**

## Caractéristiques

Médiums	Air, neutral gases, filtered
Pression de service	1.5 to 10 bar
Température de service	-20 °C to +70 °C
Raccord électrique	Plug connector PG 9
joint à la livraison	Plug connector PG 9, 1 coding pin, 2 O-rings, 2 fixing screws
Consommation de puissance	3 W=5 VA~
Boîtier	Aluminium, anodised
Tiroir	Stainless steel
Matériau étanche	NBR



## Remarque

Autres informations sur demande.

## Description

3/2 and 5/2-way spool valves, monostable, with air purging function and pneumatic spring return. With latching manual operator and optional outgoing air restriction.

Two or three-piece service units with excellent flow rates in modern design. <br>Lockable diaphragm pressure regulator with secondary ventilation, oil can be filled without interrupting operation.<br>

## Article

Désignation	Tension	Raccord	DN	Débit (L/min)
K- 07 15 00 03	230 V, 50 Hz	G 1/4	7	1250
K- 07 15 00 04	24 V DC	G 1/4	7	1250