

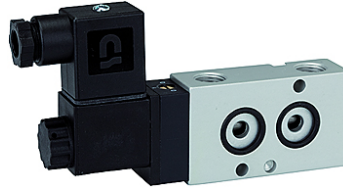
K-WV 3/2 LB NAMUR GETAUSCHT

3/2-way spool valves with NAMUR style interface, NC, ports 1 and 3 or 2 and 3 swapped

HANSA FLEX

Caractéristiques

Médiums	Air, neutral gases, filtered
Pression de service	1.5 to 10 bar
Température de service	-20 °C to +70 °C
Raccord électrique	Plug connector PG 9
joint à la livraison	Plug connector PG 9, 1 coding pin, 2 O-rings, 2 fixing screws
Consommation de puissance	3 W=5 VA~
Boîtier	Aluminium, anodised
Tiroir	Stainless steel
Matériau étanche	NBR



Remarque

Autres informations sur demande.

Description

3/2 and 5/2-way spool valves, monostable, with air purging function and pneumatic spring return. With latching manual operator and optional outgoing air restriction.

Two or three-piece service units with excellent flow rates in modern design.
Lockable diaphragm pressure regulator with secondary ventilation, oil can be filled without interrupting operation.

Article

Désignation	Tension	Raccord	DN	Débit (L/min)
K- 07 15 00 05	230 V, 50 Hz	G 1/4	7	1250
K- 07 15 00 06	24 V DC	G 1/4	7	1250