

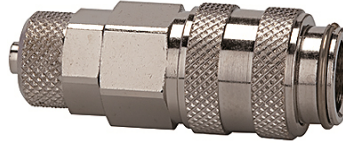
# K-SVKM NW 5 SCHL MS NI1

Quick disconnect couplings DN 5, nickel-plated brass with hose connector

**HANSA FLEX**

## Caractéristiques

<b>Pression de service</b>	0 - 35 bar, maximum static working pressure (non-pulsating)
<b>Débit d'air</b>	560 l/min (at 6 bar and $\Delta p = 0.5$ bar)
<b>Température de fluide</b>	-20 °C to +100 °C
<b>Boîtier, douille, corps de vanne</b>	Nickel-plated brass
<b>Ressort, circlip, sphères</b>	Stainless steel
<b>Matériau étanche</b>	NBR



## Remarque

Autres informations sur demande.

## Description

One-hand quick disconnect couplings, one side sealing, compact with a large bore and only a small pressure drop. Ideal for: Pneumatic tools, pneumatic applications, medical equipment, instrumentation and control, laboratory, chemical applications, analysis, metering techniques.

## Article

Désignation	Raccord	Longueur (mm)	SW (mm)
K- 07 35 06 65	Hose connection 6 x 4	43,0	14
K- 07 35 06 66	Hose connection 8 x 6	43,0	14