

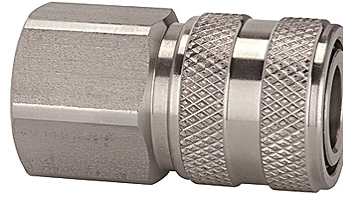
K-SVKM NW 7,2 IG VA

Quick disconnect couplings DN 7.2, stainless steel, female

HANSA FLEX

Caractéristiques

Pression de service	1 - 35 bar and rough vacuum
Débit d'air	1.000 l/min (at 6 bar and $\Delta p = 0.5$ bar)
Température de fluide	-25 °C to +200 °C
Boîtier, douille, corps de vanne	Stainless steel 1.4305
Ressort, circlip	Stainless steel 1.4310
Tiges de verrouillage	Stainless steel 1.4401
Matériau étanche	FKM



Remarque

Autres informations sur demande.

Description

Classic standard coupling type, one side sealing, made of stainless steel. The closed sleeve protects the coupling from dirt. We recommend the use of stainless steel plugs and stems!

Article

Désignation	Raccord	Longueur (mm)	SW (mm)
K- 07 35 07 62	G 1/4 female	43,0	22
K- 07 35 07 63	G 3/8 female	43,0	22
K- 07 35 07 64	G 1/2 female	46,0	24

Accessoires

K-NIPPEL KUPPL NW7 AG VA 2	Plugs for couplings DN 7.2 - DN 7.8, stainless steel 1.4305, male
K-NIPPEL KUPPL NW7 IG VA 1	Plugs for couplings DN 7.2 - DN 7.8, stainless steel 1.4305, female
K-TUE 7,2 7,8 VA 2	Stems for couplings DN 7.2 - DN 7.8, stainless steel 1.4305