

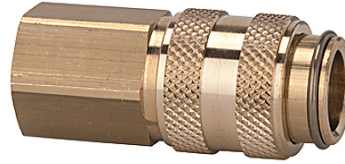
K-SVKM NW 5 ABSP IG MS

Quick disconnect couplings DN 5, both sides sealing, brass, female

HANSA FLEX

Caractéristiques

Pression de service	0 - 35 bar, maximum static working pressure (non-pulsating)
Débit d'air	310 l/min (at 6 bar and $\Delta p = 0.5$ bar)
Température de fluide	-20 °C to +100 °C
Boîtier, douille, corps de vanne	Brass
Ressort, circlip, sphères	stain less steel
Matériau étanche	NBR



Remarque

Autres informations sur demande.

Description

Both the coupling and the self-sealing plug are fitted with a valve. Connection: Both valves open and the medium is allowed to pass. Disconnection: Both valves close and the medium is prevented from escaping.

Article

Désignation	Raccord	Longueur (mm)	SW (mm)
K- 07 35 06 75	G 1/8 female	38,0	14
K- 07 35 06 76	G 1/4 female	38,0	17