

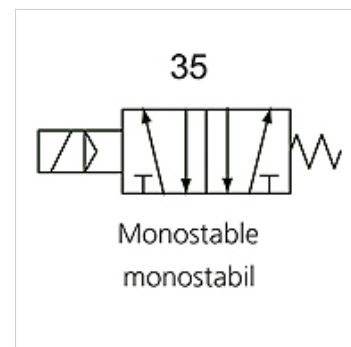
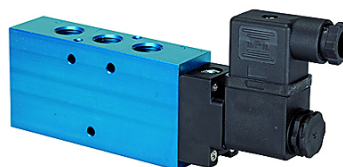
K-WV 5/2 EINS ELEKTRO

5/2-way spool valves, single solenoid

HANSA FLEX

Caractéristiques

Fonction	5/2-way
Pression de service	2.5 - 10 bar; Max. vacuum 10 bar (external pilot air)
Pression de service mini	2,5 bar
Plage de température	-10 °C to +60 °C
Débit à 6 bar et 10 bar	1500 NI/min (G 1/4), 4600 NI/min (G 1/2)
Raccord électrique	Coupler plug PG 9 - form B
Indice de protection	IP 65 (DIN 46244)
Boîtier	Anodised aluminium, blue
Tiroir cylindrique	Stainless steel
Matériau étanche	NBR



Remarque

Autres informations sur demande.

Description

This valve design, featuring the Tapered Tee Seal®, offers the ability to run without lubrication and supports almost any compressed air quality. The valves are largely resistant to dirt and can thus also be used under extreme conditions without any problems. Leakage is now a thing of the past and the spool no longer sticks, even after long idle periods.

Article

Désignation	Raccord	Tension	DN	Schéma numéro	Commande
K- 07 15 02 21	G 1/4	24 V DC	8	35	
K- 07 15 02 22	G 1/2"	24 V DC	15	35	
K- 07 15 02 23	G 1/4	230 V AC, 50 Hz	8	35	
K- 07 15 02 24	G 1/2"	230 V AC, 50 Hz	15	35	