

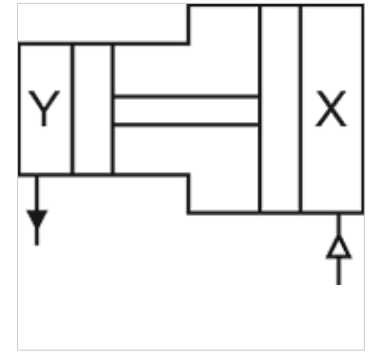
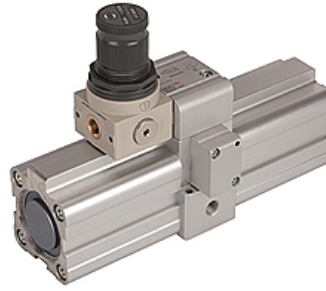
K-DVST MIT REGLER

Pressure booster with regulator

HANSA FLEX

Caractéristiques

Pression d'entrée	2 - 10 bar
Pression en sortie	Max. 20 bar (regulated: max. 16 bar)
Plage de température	-10 °C to +50 °C (40 mm bore), -10 °C to +60 °C (63 mm bore)
Médiums	Filtered, unlubricated or lubricated compressed air (if lubrication is used, it must be continuous)
Matériau étanche	NBR
Régulateur de pression	With plastic body
Boîtier	Aluminium, anodised
Tube	Anodised aluminium jacket
Montage	Any position, with 4 mounting holes
P2:P1	1:1 to 1.6:1



Remarque

For information about calculating the filling times for different tank sizes, refer to the above-mentioned data sheet available on our website
Autres informations sur demande.

Description

Pressure multipliers (boosters) allow a separate compressed air store with up to double pressure to be installed for selected devices in a compressed air system without an external energy source, i.e. it is possible to work with a maximum pressure of 20 bar in a standard 10 bar system (maximum ratio 2:1). This is achieved using a double piston, which is operated by a combination of integrated check valves in such a way that the booster works automatically until the target pressure is reached in a compressed air tank and is then automatically switched off. A tank is always required to build up the pressure and store the compressed air!

Informations supplémentaires

Fixing bracket with nut

Article

Désignation	Raccord	Ø pistons (mm)	H (mm)	L (mm)
K- 07 25 08 65	G 1/8	40,0	139,0	194,0
K- 07 25 08 67	G 3/8	63,0	183,0	290,0

Accessoires

K-ZUBEH ERSATZ LUFT BOOSTER Accessories / spare parts for Air-air-multiplier (booster)