

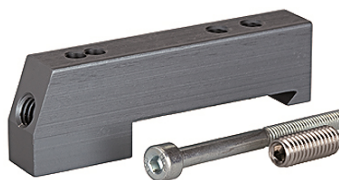
K-ADA HUTPROFIL

Adapter for DIN rail

HANSA FLEX

Caractéristiques

Médiums	Filtered, unlubricated or lubricated compressed air. If lubrication is used, it must be continuous.
Pression de service	Max. vacuum 10 bar (external pilots), 3 to 7 bar (internal pilots as standard)
Pression de commande	3 - 7 bar
Plage de température	-10 °C to +60 °C
Débit	200 NI/min (Ø 4), 500 NI/min (Ø 6), 800 NI/min (Ø 8)
Nombre de raccordements	Max. 16 (e.g. 16 spring return valves)
Commande auxiliaire manuelle	Latching (bistable), Monostable (non-latching) version also available on request
Consommation de puissance	0.6 W per pilot
Indice de protection	IP 65



Remarque

Autres informations sur demande.

Description

These compact valve terminals, with a maximum flow rate of 800 NI/min, can be individually adapted to the specific conditions of each application thanks to the wide range of functions and various input and intermediate plates. Since each valve terminal is a customer-specific combination of a series of individual elements, the catalogue only lists the available input, intermediate and end plates as well as the different valve discs and the 25-pin multi-pole connectors.

Informations supplémentaires

Important: The scope of supply does not include a connector. Please order separately.

Article

Désignation	Définition
K- 07 15 22 43	Adapter for DIN rail