

K-STECKVERBINDU MINI

Unions, mini

HANSA FLEX

Caractéristiques

Pression de service Max. 10 bar, vacuum

Domaine d'utilisation Air, vacuum

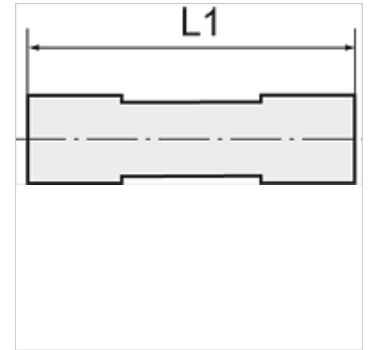
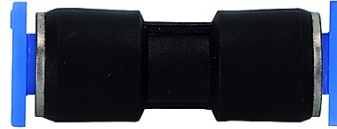
Tuyaux recommandés PU or PA (nylon)

Médiums Air comprimé

Plage de température 0 °C to +60 °C

Matériau Plastic, Nickel plated brass

Bague de pression Plastic



Remarque

Autres informations sur demande.

Description

Push-in fittings series manufactured in plastic and nickel-plated brass, space-saving miniature design.

Article

Désignation	pour Ø ext. du tuyau	L1 (mm)
K- 07 40 23 81	3 mm	21,0
K- 07 40 23 82	4 mm	26,5
K- 07 40 23 83	6 mm	27,5